

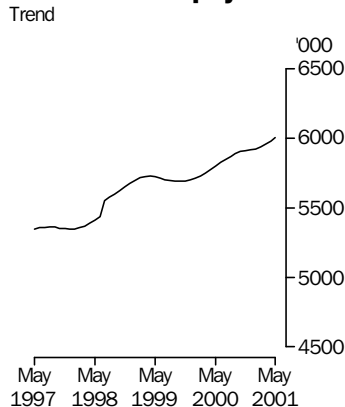
WAGE AND SALARY EARNERS

AUSTRALIA

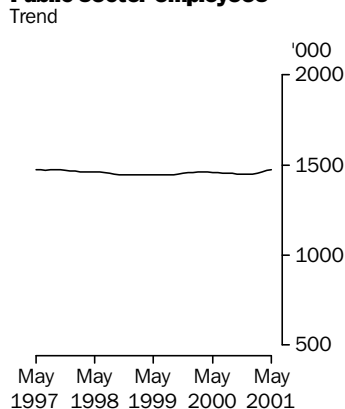
EMBARGO: 11:30AM (CANBERRA TIME) THURS 11 OCT 2001

JUNE QUARTER 2001 KEY FIGURES

Private sector employees



Public sector employees



ESTIMATES

	May 2001 '000	% change Feb 2001 to May 2001	% change May 2000 to May 2001
Trend—employees			
Private sector	6 004.2	1.1	3.5
Public sector	1 475.7	1.3	1.1
Private and public sectors	7 479.9	1.2	3.0
Seasonally adjusted—employees			
Private sector	6 026.4	2.0	4.3
Public sector	1 473.7	1.7	1.4
Private and public sectors	7 500.1	1.9	3.7

	June Qtr 2001 \$m	% change Mar Qtr 2001 to Jun Qtr 2001	% change Jun Qtr 2000 to Jun Qtr 2001
Original—gross earnings			
Private sector	52 387.1	5.1	9.1
Public sector	15 658.9	-0.4	4.0
Private and public sectors	68 046.0	3.8	7.9

JUNE QUARTER 2001 KEY POINTS

TREND ESTIMATES

PRIVATE SECTOR

- From May 2000 to May 2001 the number of employees increased by 204,600 (3.5%) to 6,004,200. The largest annual percentage increases were in Tasmania (9.7%) and Victoria (7.4%).

PUBLIC SECTOR

- From May 2000 to May 2001 the number of employees increased by 15,900 (1.1%) to 1,475,700.
- In the same period the number of employees increased in local government by 4.9% and State government by 1.2%, but decreased in Commonwealth government by 1.4%.

INDUSTRY

- From May 2000 to May 2001 the number of employees increased in Property and business services by 11.1% and in Health and community services by 10.5%.
- In the same period the number of employees decreased in Electricity gas and water supply by 10.2% and in Cultural and recreational services by 6.1%.

- For further information about these and related statistics, contact Naomi Summers on Perth 08 9360 5141, or the National Information and Referral Service on 1300 135 070.

NOTES

FORTHCOMING ISSUES

ISSUE (Quarter)

EXPECTED RELEASE DATE

September Quarter 2001

24 January 2002

December Quarter 2001

11 April 2002



PUBLICATION CHANGES

CESSATION OF PRIVATE SECTOR ESTIMATES

The private sector component of the Survey of Employment and Earnings will be discontinued after the December quarter 2001. The December quarter issue of this publication will be the last in which estimates of wage and salary earners and quarterly earnings for the private sector will be presented. Further information about changes to ABS business surveys and details of alternative sources of employment and earnings statistics are provided in:

Information Paper: Improvements to Australian Bureau of Statistics Quarterly Business Indicators, 2001 (Cat. no. 5677.0)—issued 6 July 2001.



NOTES ON ESTIMATES

PRIVATISATION

The privatisation of public financial and public trading enterprises has affected estimates at the sector level over recent years.

Mainly Commonwealth Government and State Government enterprises, principally engaged in Electricity, gas and water supply, Transport and storage and Finance and insurance, have been sold.



SAMPLING ERRORS

For information on sampling errors see the Technical Notes. Standard errors for the original estimates contained in this publication are in tables A and B of the Technical Notes.



SYMBOLS AND OTHER USAGES

ABS	Australian Bureau of Statistics
ANZSIC	Australian and New Zealand Standard Industrial Classification
ASIC	Australian Standard Industrial Classification
AWE	Survey of Average Weekly Earnings
LFS	Labour Force Survey
SEE	Survey of Employment and Earnings
SISCA	Standard Institutional Sector Classification of Australia
n.a.	not available
n.p.	not available for publication, but included in totals. See paragraph 33 of the Explanatory Notes
*	subject to high relative standard error. See paragraph 3 of the Technical Notes
—	nil or rounded to zero



Dennis Trewin
Australian Statistician

CONTENTS

		page
EDITORIAL		
	Notes	2
TABLES		
Wage and salary earners	1 Industry, Australia: trend & seasonally adjusted	4
	2 Sector, States & Territories: trend	5
	3 Level of government, States & Territories: trend	6
	4 Sector, States & Territories: seasonally adjusted	7
	5 Level of government, States & Territories: seasonally adjusted	8
	6 Sector, States & Territories: original	9
	7 Level of government, States & Territories: original	10
Gross earnings	8 Sector, States & Territories: original	11
	9 Level of government, States & Territories: original	12
Wage and salary earners	10 Full-time & part-time, industry and States & Territories: original	13
	11 Sector, industry, Australia: original	14
	12 Level of government, industry, Australia: original	15
	13 Sector, industry, New South Wales: original	16
	14 Sector, industry, Victoria: original	17
	15 Sector, industry, Queensland: original	18
	16 Sector, industry, South Australia: original	19
	17 Sector, industry, Western Australia: original	20
	18 Sector, industry, Tasmania: original	21
	19 Industry, Territories: original	22
	20 Private sector, employer size, industry and States & Territories: original	23
ADDITIONAL INFORMATION		
	Explanatory notes	24
	Technical notes	30
	Special data service	33
	Glossary	34

WAGE AND SALARY EARNERS, Industry—Australia: **Trend & Seasonally Adjusted**

	February 2000	May 2000	August 2000	November 2000	February 2001	May 2001
Industry	'000	'000	'000	'000	'000	'000
TREND						
Mining	64.5	64.6	65.0	65.8	66.1	66.4
Manufacturing	879.5	883.1	877.7	863.4	855.7	863.9
Electricity, gas and water supply	55.6	53.1	51.4	50.4	49.5	47.7
Construction	376.2	393.3	399.4	390.1	387.9	383.7
Wholesale trade	528.3	515.0	505.9	506.3	510.9	509.0
Retail trade	1 039.9	1 039.5	1 041.9	1 058.1	1 077.9	1 102.5
Accommodation, cafes and restaurants	377.8	389.0	391.4	390.0	388.5	393.4
Transport and storage	306.5	305.1	306.0	308.0	311.8	317.4
Communication services	119.9	123.4	123.2	119.2	116.9	117.3
Finance and insurance	282.0	281.9	282.0	284.6	282.6	284.1
Property and business services	943.6	977.8	1 024.8	1 052.5	1 054.7	1 086.0
Government administration and defence	342.3	346.6	334.4	337.1	343.5	345.9
Education	620.2	618.4	619.4	619.3	620.0	629.7
Health and community services	782.2	792.3	813.6	838.4	855.9	875.7
Cultural and recreational services	190.1	195.6	194.4	187.1	183.3	183.7
Personal and other services	281.7	281.4	285.5	287.5	285.7	278.2
All industries(a)	7 192.5	7 259.4	7 325.7	7 362.4	7 393.6	7 479.9

SEASONALLY ADJUSTED

Mining	64.7	65.0	64.4	66.5	66.2	66.7
Manufacturing	881.9	881.3	877.2	866.0	848.0	868.5
Electricity, gas and water supply	56.0	52.6	51.8	50.0	50.1	47.3
Construction	375.6	391.1	399.0	387.2	392.4	382.4
Wholesale trade	525.3	516.0	505.8	504.0	510.1	506.5
Retail trade	1 042.8	1 037.1	1 036.8	1 061.5	1 071.4	1 107.2
Accommodation, cafes and restaurants	375.4	385.7	387.8	394.6	384.1	393.7
Transport and storage	307.5	303.6	305.0	305.5	309.7	321.1
Communication services	120.5	123.9	122.8	119.3	116.2	118.1
Finance and insurance	282.4	283.5	280.8	288.5	280.9	285.0
Property and business services	939.9	976.9	1 022.8	1 061.1	1 044.1	1 101.4
Government administration and defence	342.1	346.6	335.4	336.4	350.1	346.5
Education	619.5	612.4	620.8	619.2	612.2	629.9
Health and community services	780.3	792.8	809.6	843.9	849.9	878.8
Cultural and recreational services	186.5	195.3	195.7	185.6	181.4	182.2
Personal and other services	282.4	276.4	287.7	281.9	288.5	276.6
All industries(a)	7 186.2	7 232.9	7 315.5	7 372.1	7 358.5	7 500.1

(a) Includes employees of government agencies classified to Agriculture, forestry and fishing.

WAGE AND SALARY EARNERS, Sector—States & Territories: **Trend**

Month	New South Wales	Victoria	Queensland	South Australia	Western Australia	Tasmania	Northern Territory	Australian Capital Territory	Australia
	'000	'000	'000	'000	'000	'000	'000	'000	'000
PRIVATE									
May									
1994	1 683.0	1 263.3	780.1	382.0	445.8	111.4	43.7	66.7	4 776.0
1995	1 771.4	1 372.8	854.8	395.0	458.5	104.8	41.4	64.5	5 063.2
1996	1 867.0	1 379.4	894.0	403.5	501.4	112.5	44.6	66.6	5 269.0
1997	1 906.4	1 412.2	880.0	380.1	526.5	120.9	50.0	73.3	5 349.4
1998	1 908.5	1 429.1	908.1	383.8	551.1	114.8	46.2	68.5	5 410.1
1999	1 986.4	1 493.5	1 012.5	403.5	573.6	118.9	51.8	82.5	5 722.7
2000									
February	1 904.7	1 544.0	1 022.5	418.4	585.3	116.8	54.8	83.6	5 730.1
May	1 946.6	1 561.5	1 024.0	421.1	591.2	115.0	56.0	84.2	5 799.6
August	1 955.0	1 598.9	1 033.7	425.6	604.2	115.7	54.9	83.9	5 871.9
November	1 927.5	1 628.7	1 054.8	421.7	619.4	118.3	55.0	86.0	5 911.4
2001									
February	1 919.3	1 647.6	1 056.8	424.5	624.7	119.8	57.4	87.1	5 937.2
May	1 956.3	1 676.6	1 051.9	436.9	613.0	126.2	57.9	85.4	6 004.2
PUBLIC									
May									
1994	504.5	372.6	268.6	136.1	152.4	44.3	20.6	73.2	1 572.1
1995	527.4	356.3	273.2	128.8	155.2	44.9	21.5	74.2	1 581.3
1996	512.5	354.7	284.5	125.8	150.7	45.1	22.3	73.6	1 569.0
1997	472.6	324.0	281.6	115.9	145.9	42.8	22.8	67.5	1 474.1
1998	473.6	312.3	279.0	118.6	147.1	41.0	21.8	68.7	1 462.3
1999	465.5	303.0	289.5	113.0	148.5	41.1	22.0	66.9	1 448.8
2000									
February	465.2	307.5	294.1	114.0	149.4	40.9	22.2	69.2	1 462.4
May	465.0	307.2	293.3	113.9	147.9	41.0	22.2	69.5	1 459.8
August	461.8	305.0	293.2	112.3	148.5	40.7	22.4	69.7	1 453.8
November	459.7	305.9	289.9	111.7	150.7	41.0	22.6	69.4	1 451.0
2001									
February	458.4	310.3	289.8	112.5	151.4	41.7	22.8	69.7	1 456.4
May	460.4	320.7	294.0	113.5	152.0	42.0	23.5	69.7	1 475.7
PRIVATE AND PUBLIC									
May									
1994	2 187.5	1 635.9	1 048.7	518.1	598.2	155.7	64.3	139.9	6 348.1
1995	2 298.8	1 729.1	1 128.0	523.8	613.7	149.7	62.9	138.7	6 644.5
1996	2 379.5	1 734.1	1 178.5	529.3	652.1	157.6	66.9	140.2	6 838.0
1997	2 379.0	1 736.2	1 161.6	496.0	672.4	163.7	72.8	140.8	6 823.5
1998	2 382.1	1 741.4	1 187.1	502.4	698.2	155.8	68.0	137.2	6 872.4
1999	2 451.9	1 796.5	1 302.0	516.5	722.1	160.0	73.8	149.4	7 171.5
2000									
February	2 369.9	1 851.5	1 316.6	532.4	734.7	157.7	77.0	152.8	7 192.5
May	2 411.6	1 868.7	1 317.3	535.0	739.1	156.0	78.2	153.7	7 259.4
August	2 416.8	1 903.9	1 326.9	537.9	752.7	156.4	77.3	153.6	7 325.7
November	2 387.2	1 934.6	1 344.7	533.4	770.1	159.3	77.6	155.4	7 362.4
2001									
February	2 377.7	1 957.9	1 346.6	537.0	776.1	161.5	80.2	156.8	7 393.6
May	2 416.7	1 997.3	1 345.9	550.4	765.0	168.2	81.4	155.1	7 479.9

WAGE AND SALARY EARNERS, Level of Government—States & Territories: **Trend**

Month	New South Wales	Victoria	Queensland	South Australia	Western Australia	Tasmania	Northern Territory	Australian Capital Territory	Australia
	'000	'000	'000	'000	'000	'000	'000	'000	'000
COMMONWEALTH GOVERNMENT									
May									
1994	114.4	85.4	44.3	24.6	21.8	7.6	3.7	53.7	355.5
1995	119.9	85.8	45.2	24.4	22.5	7.7	4.0	54.4	363.9
1996	107.0	84.1	45.2	23.8	23.3	7.7	4.3	55.1	350.5
1997	79.4	65.9	37.7	21.2	20.7	6.6	4.0	50.1	285.6
1998	73.6	59.1	34.3	17.3	20.3	5.9	3.4	49.4	263.3
1999	68.3	53.3	32.5	15.9	17.0	5.8	3.6	48.4	244.8
2000									
February	69.1	55.1	31.5	16.1	16.9	5.7	3.2	51.1	248.7
May	68.8	55.5	31.7	16.1	16.9	5.7	3.3	51.5	249.5
August	67.4	55.3	31.8	15.9	17.0	5.7	3.4	51.6	248.1
November	65.8	54.3	31.7	15.8	17.3	5.6	3.5	51.5	245.5
2001									
February	64.6	53.5	32.0	15.7	17.1	5.6	3.6	52.2	244.3
May	64.4	53.7	32.9	15.9	17.2	5.7	3.7	52.4	245.9
STATE GOVERNMENT									
May									
1994	337.0	241.9	191.0	102.5	117.2	32.9	15.6	19.5	1 057.6
1995	353.9	230.1	194.2	96.3	120.2	33.1	16.0	19.8	1 063.6
1996	353.1	229.9	204.7	94.1	114.7	33.1	16.0	18.5	1 064.1
1997	349.1	218.4	206.8	86.9	111.9	32.1	16.1	17.4	1 038.7
1998	355.4	222.0	209.1	93.1	113.9	31.4	16.4	19.3	1 060.6
1999	352.4	218.7	221.5	89.3	118.4	31.6	15.5	18.5	1 065.9
2000									
February	351.6	220.6	227.9	90.0	119.0	31.4	16.2	18.1	1 074.8
May	351.5	219.6	226.3	90.0	117.4	31.6	16.5	18.0	1 070.9
August	349.3	217.3	225.1	88.7	118.6	31.2	16.7	18.1	1 065.0
November	348.4	219.1	220.7	88.1	120.3	31.5	16.7	17.9	1 062.7
2001									
February	347.7	224.0	220.0	88.8	120.9	32.2	16.6	17.5	1 067.7
May	349.1	234.0	223.3	89.3	121.2	32.5	16.8	17.3	1 083.5
LOCAL GOVERNMENT									
May									
1994	53.1	45.3	33.3	9.0	13.4	n.a.	n.a.	n.a.	159.0
1995	53.6	40.4	33.8	8.1	12.5	n.a.	n.a.	n.a.	153.8
1996	52.4	40.7	34.6	7.9	12.7	n.a.	n.a.	n.a.	154.4
1997	44.1	39.7	37.1	7.8	13.3	n.a.	n.a.	n.a.	149.8
1998	44.6	31.2	35.6	8.2	12.9	n.a.	n.a.	n.a.	138.4
1999	44.8	31.0	35.5	7.8	13.1	n.a.	n.a.	n.a.	138.1
2000									
February	44.5	31.8	34.7	7.9	13.5	n.a.	n.a.	n.a.	138.9
May	44.7	32.1	35.3	7.8	13.6	n.a.	n.a.	n.a.	139.4
August	45.1	32.4	36.3	7.7	12.9	n.a.	n.a.	n.a.	140.7
November	45.5	32.5	37.5	7.8	13.1	n.a.	n.a.	n.a.	142.8
2001									
February	46.1	32.8	37.8	8.0	13.4	n.a.	n.a.	n.a.	144.4
May	46.9	33.0	37.8	8.3	13.6	n.a.	n.a.	n.a.	146.3

WAGE AND SALARY EARNERS, Sector—States & Territories: **Seasonally Adjusted**

Month	New South Wales	Victoria	Queensland	South Australia	Western Australia	Tasmania	Northern Territory	Australian Capital Territory	Australia
	'000	'000	'000	'000	'000	'000	'000	'000	'000
PRIVATE									
May									
1994	1 692.2	1 260.4	782.7	378.4	441.8	112.2	43.3	66.5	4 777.5
1995	1 759.5	1 379.0	855.7	397.1	457.9	104.4	40.4	64.6	5 058.6
1996	1 866.2	1 373.6	890.5	413.7	503.3	112.3	44.7	67.0	5 271.3
1997	1 911.5	1 419.4	875.2	381.2	525.6	121.1	50.6	73.2	5 357.8
1998	1 910.2	1 436.5	915.0	383.9	551.8	114.9	45.9	67.2	5 425.4
1999	1 982.4	1 489.8	1 017.9	404.2	572.2	118.2	52.0	83.3	5 720.0
2000									
February	1 897.4	1 552.4	1 022.5	418.5	578.8	117.6	55.3	83.5	5 726.0
May	1 946.4	1 546.6	1 018.1	419.5	592.2	115.0	56.1	85.0	5 778.9
August	1 952.4	1 599.7	1 025.7	428.8	602.9	114.3	55.5	82.5	5 861.8
November	1 937.9	1 632.6	1 052.0	420.1	617.2	118.3	54.1	86.5	5 918.7
2001									
February	1 901.4	1 641.3	1 057.9	419.9	625.5	117.0	57.9	88.0	5 908.9
May	1 970.4	1 685.9	1 053.2	442.8	604.8	127.9	57.5	83.9	6 026.4
PUBLIC									
May									
1994	505.5	372.7	268.1	136.5	151.9	44.6	20.8	73.6	1 573.7
1995	531.4	358.4	272.7	129.6	155.8	44.4	21.4	74.4	1 588.3
1996	511.3	355.4	284.8	125.7	152.4	45.3	22.3	73.7	1 571.0
1997	472.2	321.1	283.2	116.2	145.7	42.9	22.6	67.0	1 470.9
1998	474.1	312.3	279.3	118.2	145.8	41.1	21.7	68.5	1 460.8
1999	464.2	303.3	289.5	114.2	150.6	41.0	22.2	67.4	1 452.1
2000									
February	461.8	308.0	294.9	114.1	149.2	40.9	22.4	69.0	1 460.2
May	463.1	307.6	290.4	113.8	147.2	40.7	22.2	69.1	1 454.0
August	461.3	304.3	293.0	112.2	149.9	40.7	22.2	69.7	1 453.7
November	460.1	305.9	290.2	112.5	151.0	41.2	22.7	69.7	1 453.4
2001									
February	451.2	306.9	290.8	113.9	152.9	41.7	22.6	69.7	1 449.6
May	459.6	320.6	292.7	113.7	153.3	41.6	23.7	68.9	1 473.7
PRIVATE AND PUBLIC									
May									
1994	2 197.7	1 633.1	1 050.8	514.9	593.7	156.8	64.1	140.1	6 351.2
1995	2 290.9	1 737.4	1 128.4	526.7	613.7	148.8	61.8	139.0	6 646.9
1996	2 377.5	1 729.0	1 175.3	539.4	655.7	157.6	67.0	140.7	6 842.3
1997	2 383.7	1 740.5	1 158.4	497.4	671.3	164.0	73.2	140.2	6 828.7
1998	2 384.3	1 748.8	1 194.3	502.1	697.6	156.0	67.6	135.7	6 886.2
1999	2 446.6	1 793.1	1 307.4	518.4	722.8	159.2	74.2	150.7	7 172.1
2000									
February	2 359.2	1 860.4	1 317.4	532.6	728.0	158.5	77.7	152.5	7 186.2
May	2 409.5	1 854.2	1 308.5	533.3	739.4	155.7	78.3	154.1	7 232.9
August	2 413.7	1 904.0	1 318.7	541.0	752.8	155.0	77.7	152.2	7 315.5
November	2 398.0	1 938.5	1 342.2	532.6	768.2	159.5	76.8	156.2	7 372.1
2001									
February	2 352.6	1 948.2	1 348.7	533.8	778.4	158.7	80.5	157.7	7 358.5
May	2 430.0	2 006.5	1 345.9	556.5	758.1	169.5	81.2	152.8	7 500.1

WAGE AND SALARY EARNERS, Level of Government—States & Territories: **Seasonally Adjusted**

Month	New South Wales	Victoria	Queensland	South Australia	Western Australia	Tasmania	Northern Territory	Australian Capital Territory	Australia
	'000	'000	'000	'000	'000	'000	'000	'000	'000
COMMONWEALTH GOVERNMENT									
May									
1994	114.1	86.0	44.4	24.6	21.8	7.6	3.8	53.7	356.0
1995	122.7	86.3	45.5	24.6	22.7	7.7	4.0	54.4	367.9
1996	107.4	84.1	45.3	23.9	23.3	7.8	4.2	55.2	351.2
1997	79.0	65.7	37.2	22.6	20.8	6.6	4.0	49.4	285.3
1998	73.8	58.7	34.3	17.2	20.2	5.8	3.4	49.3	262.7
1999	67.3	53.5	32.4	15.7	16.8	5.8	3.6	48.8	243.9
2000									
February	69.0	55.2	31.7	16.1	16.9	5.7	3.2	51.1	248.9
May	69.2	55.6	31.6	16.3	17.0	5.8	3.3	51.2	250.0
August	67.1	55.5	31.8	15.9	16.8	5.7	3.4	51.6	247.8
November	66.1	54.2	31.8	16.0	17.4	5.7	3.5	51.6	246.3
2001									
February	64.4	53.4	31.9	15.6	17.0	5.5	3.6	52.2	243.6
May	64.7	54.0	33.2	16.1	17.4	5.8	3.6	52.2	247.0
STATE GOVERNMENT									
May									
1994	338.2	242.0	190.3	102.8	116.8	33.1	15.7	19.9	1 058.8
1995	355.0	232.1	193.5	96.9	120.7	32.8	16.0	20.0	1 067.0
1996	351.6	230.3	205.0	93.9	116.3	33.3	16.1	18.5	1 065.0
1997	349.2	216.7	207.3	85.9	111.6	32.2	16.1	17.6	1 036.6
1998	355.8	222.3	209.3	92.8	112.7	31.5	16.3	19.2	1 059.9
1999	352.0	218.8	221.7	90.7	120.6	31.4	15.5	18.6	1 069.3
2000									
February	348.4	220.9	228.5	90.2	118.9	31.4	16.4	17.9	1 072.6
May	349.2	219.8	223.5	89.8	116.6	31.2	16.4	17.9	1 064.4
August	349.1	216.4	225.0	88.6	120.2	31.2	16.7	18.1	1 065.3
November	348.5	219.4	220.8	88.7	120.5	31.6	16.8	18.1	1 064.4
2001									
February	340.7	220.7	220.9	90.4	122.6	32.3	16.5	17.5	1 061.6
May	347.7	233.5	221.5	89.2	122.2	32.0	16.9	16.7	1 079.7
LOCAL GOVERNMENT									
May									
1994	53.2	44.7	33.4	9.1	13.3	n.a.	n.a.	n.a.	158.9
1995	53.7	40.0	33.7	8.1	12.4	n.a.	n.a.	n.a.	153.4
1996	52.3	41.0	34.5	7.9	12.8	n.a.	n.a.	n.a.	154.8
1997	44.0	38.7	38.7	7.7	13.3	n.a.	n.a.	n.a.	149.0
1998	44.5	31.3	35.7	8.2	12.9	n.a.	n.a.	n.a.	138.2
1999	44.9	31.0	35.4	7.8	13.2	n.a.	n.a.	n.a.	138.9
2000									
February	44.4	31.9	34.7	7.8	13.4	n.a.	n.a.	n.a.	138.7
May	44.7	32.2	35.3	7.7	13.6	n.a.	n.a.	n.a.	139.6
August	45.1	32.4	36.2	7.7	12.9	n.a.	n.a.	n.a.	140.6
November	45.5	32.3	37.6	7.8	13.1	n.a.	n.a.	n.a.	142.7
2001									
February	46.1	32.8	38.0	7.9	13.3	n.a.	n.a.	n.a.	144.4
May	47.2	33.1	38.0	8.4	13.7	n.a.	n.a.	n.a.	147.0

WAGE AND SALARY EARNERS, Sector—States & Territories: **Original**

Month	New South Wales	Victoria	Queensland	South Australia	Western Australia	Tasmania	Northern Territory	Australian Capital Territory	Australia
	'000	'000	'000	'000	'000	'000	'000	'000	'000
PRIVATE									
May									
1994	1 690.2	1 263.1	786.2	380.6	446.6	113.7	43.4	67.1	4 791.0
1995	1 758.5	1 384.6	860.8	399.6	463.4	105.9	40.5	65.3	5 078.7
1996	1 866.1	1 381.2	897.9	416.6	510.5	113.8	44.9	67.9	5 298.9
1997	1 913.1	1 427.2	884.2	383.9	534.0	122.5	50.8	74.6	5 390.2
1998	1 912.6	1 443.5	925.9	386.3	561.6	116.1	46.1	69.0	5 461.0
1999	1 986.0	1 495.5	1 031.4	406.0	582.7	119.5	52.3	85.8	5 759.1
2000									
February	1 905.3	1 545.0	1 016.3	420.3	575.3	118.8	52.8	83.0	5 716.9
May	1 950.7	1 552.1	1 032.7	421.0	603.2	116.2	56.5	87.7	5 820.2
August	1 964.0	1 611.7	1 031.5	424.4	604.4	115.0	57.6	82.6	5 891.2
November	1 954.5	1 654.7	1 058.5	428.5	617.8	118.0	55.6	85.4	5 972.9
2001									
February	1 909.2	1 634.2	1 051.3	421.8	621.5	118.2	55.3	87.4	5 898.9
May	1 975.3	1 691.6	1 069.0	444.4	616.0	129.2	57.9	86.6	6 070.0
PUBLIC									
May									
1994	513.0	374.2	269.8	137.7	152.7	45.5	20.9	74.5	1 588.3
1995	539.3	359.9	274.4	130.4	156.6	45.4	21.5	75.3	1 603.0
1996	519.0	357.1	286.6	126.2	153.1	46.3	22.4	74.7	1 585.3
1997	479.4	322.8	285.1	116.3	146.1	43.8	22.7	67.8	1 484.1
1998	481.1	314.1	281.2	118.2	145.8	41.9	21.8	69.3	1 473.4
1999	471.0	305.2	291.6	114.1	150.3	41.8	22.2	68.0	1 464.2
2000									
February	454.1	303.8	292.7	111.2	147.1	39.1	22.0	67.7	1 437.8
May	469.9	309.8	292.4	113.7	146.6	41.5	22.3	69.7	1 465.9
August	465.4	309.5	294.5	114.1	151.4	41.2	22.4	69.8	1 468.4
November	467.8	309.4	292.8	113.8	152.9	42.1	22.9	69.9	1 471.7
2001									
February	443.7	302.7	288.9	111.0	150.6	39.9	22.3	68.5	1 427.5
May	466.4	323.0	294.7	113.5	152.5	42.4	23.7	69.6	1 485.8
PRIVATE AND PUBLIC									
May									
1994	2 203.2	1 637.3	1 056.0	518.3	599.3	159.2	64.3	141.6	6 379.2
1995	2 297.9	1 744.5	1 135.3	530.1	620.0	151.3	62.1	140.6	6 681.7
1996	2 385.1	1 738.3	1 184.5	542.8	663.6	160.0	67.3	142.6	6 884.2
1997	2 392.5	1 750.0	1 169.3	500.2	680.1	166.3	73.5	142.4	6 874.3
1998	2 393.7	1 757.6	1 207.1	504.5	707.4	158.0	67.9	138.2	6 934.4
1999	2 457.0	1 800.7	1 322.9	520.1	733.0	161.2	74.5	153.8	7 223.3
2000									
February	2 359.4	1 848.9	1 309.1	531.5	722.4	157.9	74.8	150.7	7 154.7
May	2 420.7	1 861.9	1 325.2	534.8	749.8	157.7	78.7	157.4	7 286.2
August	2 429.4	1 921.3	1 326.0	538.5	755.8	156.2	80.0	152.4	7 359.5
November	2 422.3	1 964.2	1 351.3	542.3	770.6	160.1	78.4	155.4	7 444.6
2001									
February	2 352.9	1 936.9	1 340.1	532.7	772.1	158.2	77.6	155.9	7 326.4
May	2 441.7	2 014.6	1 363.7	557.8	768.5	171.6	81.6	156.2	7 555.8

WAGE AND SALARY EARNERS, Level of Government—States & Territories: **Original**

Month	New South Wales	Victoria	Queensland	South Australia	Western Australia	Tasmania	Northern Territory	Australian Capital Territory	Australia
	'000	'000	'000	'000	'000	'000	'000	'000	'000
COMMONWEALTH GOVERNMENT									
May									
1994	115.1	87.1	44.7	24.8	22.1	7.6	3.8	54.5	359.8
1995	123.8	87.4	45.6	24.9	23.1	7.7	4.1	55.2	371.7
1996	108.5	85.1	45.3	24.0	23.8	7.7	4.3	56.1	354.8
1997	79.9	66.3	37.2	22.7	21.2	6.5	4.0	50.1	287.7
1998	74.6	59.1	34.1	17.3	20.5	5.8	3.4	50.0	264.7
1999	68.1	53.7	32.2	15.7	17.1	5.7	3.6	49.4	245.6
2000									
February	69.5	55.3	31.7	16.2	16.9	5.7	3.2	50.6	249.2
May	70.0	55.8	31.4	16.3	17.2	5.7	3.3	51.8	251.6
August	66.0	55.3	31.9	15.9	16.8	5.7	3.4	51.6	246.5
November	65.7	54.2	32.0	15.8	17.3	5.7	3.6	51.6	245.8
2001									
February	64.9	53.4	32.0	15.7	17.0	5.5	3.6	51.7	243.8
May	65.5	54.2	33.0	16.0	17.6	5.7	3.6	52.8	248.5
STATE GOVERNMENT									
May									
1994	344.7	242.3	191.3	103.8	117.3	34.0	15.9	20.0	1 069.3
1995	362.0	232.5	194.7	97.5	121.1	33.7	16.1	20.1	1 077.8
1996	358.4	230.9	206.5	94.3	116.6	34.3	16.2	18.6	1 075.9
1997	355.8	217.7	209.2	86.1	111.7	33.2	16.3	17.7	1 047.6
1998	362.3	223.6	211.4	92.8	112.5	32.4	16.5	19.3	1 070.7
1999	358.4	220.3	224.0	90.6	120.1	32.3	15.6	18.6	1 079.9
2000									
February	340.0	216.5	226.3	87.1	116.5	29.6	16.1	17.1	1 049.2
May	355.5	221.5	225.8	89.8	115.8	32.1	16.6	17.9	1 075.0
August	354.3	221.5	226.2	90.6	121.7	31.7	16.6	18.2	1 080.8
November	356.3	222.6	223.4	90.1	122.4	32.5	16.8	18.3	1 082.4
2001									
February	332.5	216.3	218.9	87.3	120.1	30.5	16.2	16.8	1 038.6
May	354.1	235.4	223.8	89.2	121.4	32.9	17.1	16.7	1 090.6
LOCAL GOVERNMENT									
May									
1994	53.1	44.8	33.8	9.1	13.3	3.9	1.2	n.a.	159.2
1995	53.6	40.0	34.1	8.0	12.4	4.0	1.3	n.a.	153.5
1996	52.1	41.1	34.8	7.8	12.8	4.3	1.9	n.a.	154.7
1997	43.7	38.8	38.8	7.6	13.2	4.1	2.5	n.a.	148.8
1998	44.2	31.5	35.7	8.2	12.8	3.8	1.9	n.a.	138.0
1999	44.5	31.2	35.4	7.8	13.1	3.7	3.0	n.a.	138.7
2000									
February	44.6	32.1	34.7	7.9	13.6	3.8	2.7	n.a.	139.4
May	44.4	32.5	35.2	7.7	13.5	3.7	2.4	n.a.	139.4
August	45.1	32.7	36.5	7.7	13.0	3.8	2.4	n.a.	141.1
November	45.9	32.6	37.5	7.9	13.2	3.9	2.5	n.a.	143.5
2001									
February	46.3	33.0	38.0	7.9	13.5	3.9	2.5	n.a.	145.2
May	46.8	33.3	37.9	8.3	13.6	3.8	3.0	n.a.	146.7

GROSS EARNINGS, Sector—States & Territories: **Original**

<i>Period</i>	<i>New South Wales</i>	<i>Victoria</i>	<i>Queensland</i>	<i>South Australia</i>	<i>Western Australia</i>	<i>Tasmania</i>	<i>Northern Territory</i>	<i>Australian Capital Territory</i>	Australia
	\$m	\$m	\$m	\$m	\$m	\$m	\$m	\$m	\$m
PRIVATE									
1995-96	54 415.4	39 516.4	23 048.6	10 418.4	14 206.0	2 734.2	1 145.5	1 692.8	147 177.2
1996-97	59 789.0	42 652.8	24 871.0	10 295.1	15 317.7	3 073.1	1 457.8	1 726.9	159 183.4
1997-98	63 553.6	44 542.3	25 241.8	10 614.1	15 768.4	3 080.3	1 446.0	1 799.8	166 046.3
1998-99	68 130.0	49 066.6	29 118.5	11 527.0	17 715.5	3 129.9	1 588.1	2 382.9	182 658.7
1999-2000	67 931.9	53 174.7	30 763.8	12 021.6	18 904.3	3 162.1	1 880.5	2 375.1	190 214.0
2000-01	71 302.1	58 428.1	32 895.6	12 897.5	20 626.9	3 230.1	2 079.7	2 698.9	204 158.6
2000									
March	16 358.8	13 157.7	7 394.0	2 936.3	4 598.8	780.2	443.3	604.0	46 273.1
June	16 763.4	13 480.4	7 810.1	3 038.8	5 031.9	773.4	506.1	606.6	48 010.7
September	17 464.2	14 081.2	7 977.1	3 145.5	5 106.0	770.8	513.7	633.0	49 691.4
December	18 113.2	15 236.5	8 383.5	3 298.4	5 172.6	821.0	534.4	658.2	52 217.8
2001									
March	17 268.6	14 367.4	8 092.7	3 119.1	5 074.6	774.4	504.9	660.7	49 862.3
June	18 456.1	14 743.0	8 442.3	3 334.5	5 273.7	863.9	526.7	747.0	52 387.1
PUBLIC									
1995-96	18 951.8	12 724.3	9 459.0	4 390.2	5 176.3	1 496.8	847.7	3 224.4	56 270.3
1996-97	18 817.8	12 160.4	10 160.7	4 406.9	5 282.5	1 551.5	902.4	3 304.6	56 586.8
1997-98	19 707.5	12 176.5	10 626.3	4 573.1	5 468.5	1 532.9	940.0	3 364.1	58 388.9
1998-99	20 418.7	12 176.7	11 156.7	4 495.6	5 547.2	1 568.4	962.4	3 359.7	59 685.3
1999-2000	21 037.1	12 520.1	11 505.6	4 637.2	5 783.8	1 570.0	999.2	3 474.1	61 527.2
2000-01	21 374.1	13 073.0	12 130.1	4 593.6	5 958.6	1 615.5	1 043.0	3 639.6	63 427.3
2000									
March	5 351.7	3 188.5	2 731.6	1 131.1	1 484.6	392.9	269.1	921.3	15 471.0
June	5 086.8	3 118.2	2 892.4	1 170.9	1 353.5	378.3	235.0	824.6	15 059.5
September	5 499.5	3 217.0	3 022.2	1 161.3	1 537.9	412.8	272.6	1 000.8	16 124.0
December	5 299.7	3 325.3	3 214.8	1 159.3	1 439.6	399.1	244.7	842.5	15 925.1
2001									
March	5 409.6	3 133.7	2 851.6	1 111.5	1 567.0	420.2	277.5	948.3	15 719.3
June	5 165.3	3 397.0	3 041.5	1 161.5	1 414.1	383.4	248.2	848.0	15 658.9
PRIVATE AND PUBLIC									
1995-96	73 367.2	52 240.6	32 507.5	14 808.6	19 382.3	4 231.0	1 993.2	4 917.2	203 447.5
1996-97	78 606.8	54 813.2	35 031.7	14 702.0	20 600.2	4 624.6	2 360.2	5 031.6	215 770.2
1997-98	83 261.0	56 719.0	35 868.3	15 187.2	21 236.9	4 613.1	2 386.0	5 163.9	224 435.2
1998-99	88 548.7	61 243.3	40 275.3	16 022.7	23 262.7	4 698.3	2 550.5	5 742.6	242 344.0
1999-2000	88 969.0	65 694.9	42 269.4	16 659.3	24 688.1	4 732.2	2 879.6	5 849.2	251 741.7
2000-01	92 676.1	71 501.1	45 025.8	17 490.9	26 585.4	4 845.4	3 122.6	6 338.3	267 586.0
2000									
March	21 710.5	16 346.2	10 125.7	4 067.4	6 083.4	1 173.1	712.4	1 525.3	61 744.1
June	21 850.2	16 598.6	10 702.5	4 209.7	6 385.4	1 151.7	741.0	1 431.2	63 070.2
September	22 963.6	17 298.2	10 999.3	4 306.7	6 643.9	1 183.5	786.3	1 633.7	65 815.4
December	23 413.0	18 561.8	11 598.4	4 457.7	6 612.1	1 220.1	779.0	1 500.7	68 142.9
2001									
March	22 678.2	17 501.1	10 944.3	4 230.5	6 641.6	1 194.5	782.4	1 609.0	65 581.7
June	23 621.3	18 140.0	11 483.8	4 496.0	6 687.8	1 247.3	774.9	1 594.9	68 046.0

GROSS EARNINGS, Level of Government—States & Territories: **Original**

<i>Period</i>	<i>New South Wales</i>	<i>Victoria</i>	<i>Queensland</i>	<i>South Australia</i>	<i>Western Australia</i>	<i>Tasmania</i>	<i>Northern Territory</i>	<i>Australian Capital Territory</i>	<i>Australia</i>
	\$m	\$m	\$m	\$m	\$m	\$m	\$m	\$m	\$m
COMMONWEALTH GOVERNMENT									
1995–96	4 263.5	3 499.0	1 703.4	990.0	863.6	300.3	160.5	2 519.2	14 299.5
1996–97	3 735.9	3 109.8	1 655.8	914.7	885.0	299.0	165.6	2 561.8	13 327.6
1997–98	3 852.8	2 983.9	1 666.6	944.3	923.8	279.1	154.1	2 570.1	13 374.7
1998–99	3 566.2	2 848.8	1 613.4	777.0	829.7	280.4	155.5	2 528.6	12 599.6
1999–2000	3 352.2	2 703.1	1 478.7	747.4	787.4	260.8	154.3	2 661.4	12 145.4
2000–01	3 196.4	2 663.8	1 469.8	723.5	741.5	261.4	152.5	2 843.6	12 052.7
2000									
March	876.2	708.3	388.4	195.5	196.7	68.6	39.4	707.8	3 180.9
June	788.3	627.0	339.1	170.9	176.5	58.3	34.5	638.6	2 833.3
September	865.9	717.3	397.7	195.6	197.6	68.7	38.7	784.7	3 266.3
December	757.5	623.5	342.4	165.7	172.1	62.4	36.2	651.7	2 811.5
2001									
March	837.6	706.9	384.7	192.3	198.5	69.2	40.8	735.1	3 165.2
June	735.4	616.1	345.0	169.9	173.3	61.1	36.8	672.1	2 809.7
STATE GOVERNMENT									
1995–96	12 890.2	8 080.6	6 734.0	3 169.9	3 983.5	1 076.0	643.8	705.2	37 283.3
1996–97	13 520.9	8 046.3	7 359.6	3 250.2	4 035.0	1 122.7	690.7	742.8	38 768.3
1997–98	14 312.1	8 322.9	7 785.6	3 364.4	4 169.1	1 127.9	731.1	793.7	40 606.7
1998–99	15 231.2	8 471.4	8 340.9	3 451.9	4 325.7	1 164.6	757.7	830.9	42 574.1
1999–2000	15 993.1	8 906.4	8 824.3	3 614.1	4 575.4	1 185.4	788.6	812.5	44 699.7
2000–01	16 394.5	9 451.6	9 359.8	3 590.1	4 789.8	1 221.3	833.9	795.7	46 436.5
2000									
March	4 058.6	2 259.7	2 045.0	869.2	1 181.2	293.4	215.4	213.5	11 135.8
June	3 886.6	2 262.9	2 253.3	932.4	1 073.5	289.8	186.9	185.9	11 071.3
September	4 197.4	2 269.2	2 301.1	898.6	1 235.4	311.3	220.6	216.0	11 649.6
December	4 087.4	2 451.5	2 543.4	921.7	1 162.4	302.2	194.4	190.8	11 853.7
2001									
March	4 131.7	2 197.3	2 147.1	852.7	1 258.0	319.5	223.5	213.1	11 342.9
June	3 978.0	2 533.6	2 368.2	917.1	1 134.0	288.3	195.4	175.8	11 590.3
LOCAL GOVERNMENT									
1995–96	1 798.1	1 144.6	1 021.6	230.3	329.2	120.5	43.3	n.a.	4 687.6
1996–97	1 560.9	1 004.3	1 145.3	242.0	362.5	129.9	46.1	n.a.	4 491.0
1997–98	1 542.6	869.9	1 174.3	264.3	375.7	125.8	54.8	n.a.	4 407.5
1998–99	1 621.4	856.6	1 202.5	266.5	392.0	123.3	49.2	n.a.	4 511.7
1999–2000	1 691.9	910.7	1 202.7	275.6	421.0	124.0	56.1	n.a.	4 682.0
2000–01	1 783.1	957.5	1 300.7	280.0	427.2	132.8	56.6	n.a.	4 938.1
2000									
March	416.9	220.6	298.3	66.4	106.7	31.0	14.3	n.a.	1 154.2
June	411.9	228.2	300.0	67.6	103.4	30.2	13.5	n.a.	1 154.9
September	436.2	230.5	323.4	67.1	104.9	32.8	13.3	n.a.	1 208.2
December	454.8	250.3	329.1	71.9	105.1	34.5	14.1	n.a.	1 259.8
2001									
March	440.3	229.4	319.9	66.5	110.5	31.4	13.2	n.a.	1 211.3
June	451.8	247.3	328.3	74.5	106.7	34.1	16.0	n.a.	1 258.8

WAGE AND SALARY EARNERS, Full-time & Part-time: **Original**

	MAY 2000.....		AUG 2000.....		NOV 2000.....		FEB 2001.....		MAY 2001.....	
	<i>Full-time Part-time</i>		<i>Full-time Part-time</i>		<i>Full-time Part-time</i>		<i>Full-time Part-time</i>		<i>Full-time Part-time</i>	
	'000	'000	'000	'000	'000	'000	'000	'000	'000	'000
INDUSTRY										
Mining	63.6	2.8	61.4	2.8	62.8	3.1	62.9	3.1	64.6	3.5
Manufacturing	777.2	106.5	774.9	101.9	782.3	84.6	765.6	92.7	771.2	99.4
Electricity, gas and water supply	50.4	2.6	49.0	2.6	47.2	2.5	47.5	2.8	45.3	2.4
Construction	354.0	40.1	362.5	41.4	344.3	42.3	345.7	48.5	339.8	45.3
Wholesale trade	438.7	80.0	424.5	81.0	420.5	88.3	420.0	87.8	423.5	85.7
Retail trade	495.5	535.3	480.1	550.4	498.6	583.7	502.3	575.8	503.9	596.7
Accommodation, cafes and restaurants	158.7	226.9	161.3	231.8	158.5	242.5	155.2	224.5	151.5	242.5
Transport and storage	255.2	49.2	252.5	52.5	250.6	60.0	251.2	55.6	266.0	55.7
Communication services	103.5	21.0	101.4	21.4	97.0	20.9	96.0	21.4	97.8	20.9
Finance and insurance	227.4	56.4	223.3	57.2	225.2	64.1	222.9	56.0	228.7	56.8
Property and business services	709.2	272.2	727.1	311.4	754.6	312.5	731.1	302.9	776.8	329.5
Government administration and defence	280.7	65.3	270.5	64.4	272.6	67.2	275.8	74.5	275.7	70.2
Education	384.0	245.2	392.8	250.7	385.6	253.5	378.9	202.1	387.3	257.2
Health and community services	364.4	435.7	375.3	439.4	380.3	461.6	384.7	465.0	389.2	497.9
Cultural and recreational services	89.0	112.1	93.5	106.1	88.3	98.9	88.9	92.1	90.2	97.5
Personal and other services	194.1	83.2	206.8	82.0	206.4	79.4	207.2	80.6	196.4	80.8
All industries(a)	4 950.6	2 335.5	4 961.9	2 397.7	4 979.1	2 465.6	4 940.5	2 386.0	5 013.0	2 542.8
STATES AND TERRITORIES										
New South Wales	1 671.0	749.7	1 675.2	754.2	1 664.4	757.9	1 618.0	734.9	1 658.7	783.0
Victoria	1 260.1	601.8	1 270.3	651.0	1 286.7	677.5	1 285.2	651.7	1 294.2	720.4
Queensland	915.0	410.1	907.6	418.4	912.9	438.4	913.5	426.7	932.4	431.3
South Australia	335.6	199.1	340.6	197.9	339.5	202.8	337.7	195.0	346.8	211.0
Western Australia	508.1	241.8	507.7	248.1	509.2	261.4	516.7	255.4	507.4	261.2
Tasmania	94.3	63.4	94.7	61.5	99.5	60.6	98.0	60.1	102.4	69.3
Northern Territory	56.6	22.2	56.5	23.5	56.6	21.9	57.0	20.5	58.3	23.3
Australian Capital Territory	110.0	47.4	109.2	43.2	110.3	45.1	114.3	41.6	112.8	43.4
Australia	4 950.6	2 335.5	4 961.9	2 397.7	4 979.1	2 465.6	4 940.5	2 386.0	5 013.0	2 542.8

(a) Includes employees of government agencies classified to Agriculture, forestry & fishing.

WAGE AND SALARY EARNERS, Sector—Australia: **Original**

Industry	NUMBER OF EMPLOYEES.....						GROSS EARNINGS
	February 2000	May 2000	August 2000	November 2000	February 2001	May 2001	June Qtr 2001
	'000	'000	'000	'000	'000	'000	\$m
PRIVATE							
Mining	n.p.	n.p.	n.p.	n.p.	n.p.	n.p.	n.p.
Manufacturing	886.2	877.6	875.0	865.0	857.1	869.4	9 246.6
Electricity, gas and water supply	11.7	11.3	11.6	9.4	9.6	11.6	188.7
Construction	358.9	372.9	379.0	362.5	369.4	360.0	3 394.7
Wholesale trade	521.8	518.0	505.2	508.5	507.4	508.9	5 152.1
Retail trade	1 048.4	1 030.4	1 030.1	1 081.9	1 077.8	1 100.0	5 839.2
Accommodation, cafes and restaurants	370.3	384.9	392.4	400.3	379.1	393.6	1 997.1
Transport and storage	254.4	257.6	261.2	266.6	265.4	280.2	2 898.9
Communication services	n.p.	n.p.	n.p.	n.p.	n.p.	n.p.	n.p.
Finance and insurance	272.9	276.0	272.9	281.7	271.1	277.1	3 776.2
Property and business services	903.5	954.0	1 008.7	1 038.2	1 005.3	1 073.5	10 484.9
Education	174.2	189.9	191.8	187.9	182.6	195.6	1 597.6
Health and community services	473.0	491.9	503.7	527.6	531.8	560.3	3 786.1
Cultural and recreational services	158.6	172.4	169.1	157.3	151.8	156.7	1 010.6
Personal and other services	186.3	181.2	192.5	188.3	190.8	178.5	1 132.0
All industries	5 716.9	5 820.2	5 891.2	5 972.9	5 898.9	6 070.0	52 387.1
PUBLIC							
Agriculture, forestry and fishing	6.2	6.1	5.5	4.9	5.1	5.7	64.2
Manufacturing	6.1	6.1	1.9	1.8	1.2	1.3	13.0
Electricity, gas and water supply	44.4	41.7	40.0	40.3	40.7	36.1	520.4
Construction	18.6	21.3	24.9	24.1	24.9	25.0	316.1
Transport and storage	50.1	46.7	43.8	43.9	41.4	41.5	560.1
Communication services	n.p.	n.p.	n.p.	n.p.	n.p.	n.p.	n.p.
Finance and insurance	7.5	7.9	7.5	7.6	7.8	8.4	107.6
Property and business services	27.6	27.4	29.9	28.9	28.7	32.9	395.9
Government administration and defence	342.3	346.0	334.9	339.8	350.3	345.9	3 649.1
Education	413.3	439.3	451.7	451.1	398.3	449.0	4 248.5
Health and community services	307.5	308.2	311.0	314.3	317.9	326.8	3 369.5
Cultural and recreational services	27.3	28.7	30.5	29.8	29.2	31.0	329.6
Personal and other services	95.3	96.1	96.3	97.4	96.9	98.8	1 171.7
All industries(a)	1 437.8	1 465.9	1 468.4	1 471.7	1 427.5	1 485.8	15 658.9
PRIVATE AND PUBLIC							
Agriculture, forestry and fishing	6.2	6.1	5.5	4.9	5.1	5.7	64.2
Mining	64.5	66.3	64.2	65.9	66.0	68.1	1 365.9
Manufacturing	892.3	883.7	876.9	866.8	858.3	870.6	9 259.6
Electricity, gas and water supply	56.1	53.0	51.6	49.7	50.2	47.7	709.1
Construction	377.6	394.1	403.9	386.6	394.3	385.1	3 710.8
Wholesale trade	522.8	518.7	505.5	508.8	507.7	509.2	5 155.8
Retail trade	1 048.9	1 030.8	1 030.5	1 082.3	1 078.1	1 100.6	5 844.9
Accommodation, cafes and restaurants	370.9	385.6	393.1	401.0	379.7	394.0	1 999.4
Transport and storage	304.6	304.4	305.0	310.6	306.8	321.7	3 458.9
Communication services	121.8	124.5	122.8	117.9	117.4	118.7	1 418.2
Finance and insurance	280.4	283.9	280.5	289.3	279.0	285.5	3 883.8
Property and business services	931.1	981.4	1 038.6	1 067.1	1 034.0	1 106.4	10 880.7
Government administration and defence	342.3	346.0	334.9	339.8	350.3	345.9	3 649.1
Education	587.4	629.2	643.5	639.0	580.9	644.5	5 846.1
Health and community services	780.5	800.1	814.7	841.8	849.7	887.1	7 155.5
Cultural and recreational services	185.9	201.1	199.6	187.1	181.0	187.7	1 340.2
Personal and other services	281.6	277.3	288.8	285.8	287.7	277.2	2 303.7
All industries	7 154.7	7 286.2	7 359.5	7 444.6	7 326.4	7 555.8	68 046.0

(a) Includes employees classified to Mining, Wholesale trade, Retail trade and Accommodation, cafes and restaurants.

WAGE AND SALARY EARNERS, Level of Government—Australia: **Original**

Industry	NUMBER OF EMPLOYEES.....						GROSS EARNINGS
	February 2000	May 2000	August 2000	November 2000	February 2001	May 2001	June Qtr 2001
	'000	'000	'000	'000	'000	'000	\$m
COMMONWEALTH GOVERNMENT							
Agriculture, forestry and fishing	0.1	0.1	0.2	n.p.	n.p.	n.p.	n.p.
Manufacturing	2.3	2.1	0.2	0.2	0.2	0.2	2.6
Electricity, gas and water supply	n.p.	n.p.	0.6	0.6	0.6	0.6	8.4
Construction	—	—	—	—	—	0.0	—
Transport and storage	n.p.	n.p.	n.p.	n.p.	n.p.	n.p.	n.p.
Communication services	n.p.	n.p.	n.p.	n.p.	n.p.	n.p.	n.p.
Finance and insurance	2.6	3.0	3.3	3.3	3.4	3.6	46.0
Property and business services	15.2	14.6	15.4	15.1	15.3	15.6	191.8
Government administration and defence	112.2	115.4	111.1	112.2	112.8	115.3	1 326.7
Education	5.7	6.3	6.6	6.4	5.8	6.6	53.7
Health and community services	3.8	3.7	4.0	4.7	5.3	6.5	42.9
Cultural and recreational services	8.4	8.6	9.0	8.9	8.9	10.0	135.2
Personal and other services	4.1	3.9	3.6	4.8	4.5	4.7	48.4
All industries(a)	249.2	251.6	246.5	245.8	243.8	248.5	2 809.7
STATE GOVERNMENT							
Agriculture, forestry and fishing	6.0	5.9	5.2	4.8	5.0	5.5	62.2
Manufacturing	3.5	3.6	1.3	1.2	0.7	0.7	7.1
Electricity, gas and water supply	40.1	38.0	36.2	36.6	37.0	32.3	476.7
Construction	17.4	19.7	19.5	18.8	19.7	19.9	269.2
Transport and storage	43.5	40.1	38.0	38.1	35.7	35.9	471.2
Communication services	—	—	—	—	—	—	—
Finance and insurance	4.7	4.7	4.2	4.3	4.3	4.7	60.8
Property and business services	12.4	12.8	14.1	13.5	13.1	16.9	201.6
Government administration and defence	99.7	100.4	97.1	98.3	106.6	98.6	1 195.4
Education	407.5	432.9	445.1	444.6	392.5	442.3	4 194.5
Health and community services	303.2	303.9	305.6	308.1	311.2	318.7	3 316.2
Cultural and recreational services	18.0	18.9	20.4	19.7	19.1	19.7	185.7
Personal and other services	90.5	91.5	92.0	92.0	91.7	93.3	1 116.5
All industries(a)	1 049.2	1 075.0	1 080.8	1 082.4	1 038.6	1 090.6	11 590.3
LOCAL GOVERNMENT							
Agriculture, forestry and fishing	* 0.1	* 0.1	* 0.1	n.p.	n.p.	n.p.	n.p.
Manufacturing	0.4	0.4	0.3	0.3	0.3	0.4	3.3
Electricity, gas and water supply	n.p.	n.p.	n.p.	3.1	3.1	3.2	35.3
Construction	1.2	1.5	5.4	5.3	5.3	5.1	46.9
Transport and storage	n.p.	n.p.	n.p.	n.p.	n.p.	n.p.	n.p.
Communication services	—	—	—	—	—	—	—
Finance and insurance	0.1	0.2	0.1	* 0.1	* 0.1	0.1	0.8
Property and business services	—	* 0.1	* 0.3	* 0.3	* 0.4	0.3	* 2.5
Government administration and defence	130.3	130.2	126.8	129.3	130.9	132.1	1 127.0
Education	* 0.1	* 0.1	0.1	* 0.1	* 0.1	0.1	0.4
Health and community services	* 0.4	* 0.5	1.4	1.4	1.4	1.7	10.4
Cultural and recreational services	1.0	1.2	1.2	1.2	1.2	1.3	8.6
Personal and other services	0.7	0.7	0.7	0.7	0.7	0.8	6.8
All industries(a)	139.4	139.4	141.1	143.5	145.2	146.7	1 258.8

(a) Includes employees classified to Mining, Wholesale trade, Retail trade and Accommodation, cafes and restaurants.

WAGE AND SALARY EARNERS, Sector—New South Wales: **Original**

Industry	NUMBER OF EMPLOYEES.....						GROSS EARNINGS
	February 2000	May 2000	August 2000	November 2000	February 2001	May 2001	June Qtr 2001
	'000	'000	'000	'000	'000	'000	\$m
PRIVATE							
Mining	n.p.	n.p.	n.p.	n.p.	n.p.	n.p.	n.p.
Manufacturing	273.4	262.6	267.9	268.4	260.7	265.8	2 945.1
Electricity, gas and water supply	1.3	1.2	1.4	0.9	0.9	1.3	23.3
Construction	127.9	142.2	144.7	135.7	139.6	132.2	1 296.1
Wholesale trade	165.3	167.2	163.7	159.3	157.1	171.6	1 785.1
Retail trade	339.0	319.2	314.4	325.1	333.2	326.1	1 783.4
Accommodation, cafes and restaurants	137.6	142.4	150.5	147.6	132.1	128.6	731.4
Transport and storage	88.7	85.0	87.9	89.5	86.8	96.4	1 066.5
Communication services	n.p.	n.p.	n.p.	n.p.	n.p.	n.p.	n.p.
Finance and insurance	114.2	115.5	104.6	110.9	105.9	110.2	1 731.8
Property and business services	311.0	332.1	339.0	346.8	326.1	371.1	4 063.3
Education	57.0	65.4	63.4	60.7	61.4	60.8	518.2
Health and community services	147.6	156.7	161.0	166.7	166.2	170.2	1 123.4
Cultural and recreational services	53.1	65.1	65.1	49.4	48.9	52.8	398.9
Personal and other services	62.5	64.1	70.2	65.2	63.0	57.1	401.2
All industries	1 905.3	1 950.7	1 964.0	1 954.5	1 909.2	1 975.3	18 456.1
PUBLIC							
Agriculture, forestry and fishing	1.8	1.6	1.6	1.6	1.7	2.2	* 24.8
Manufacturing	1.7	1.7	0.5	0.4	0.4	0.5	4.8
Electricity, gas and water supply	16.2	13.7	13.0	12.8	12.9	12.8	205.3
Construction	4.9	6.8	7.6	7.7	8.3	8.5	121.2
Transport and storage	18.1	18.4	18.7	18.9	17.9	17.9	261.1
Communication services	n.p.	n.p.	n.p.	n.p.	n.p.	n.p.	n.p.
Finance and insurance	1.9	2.4	2.7	2.7	2.8	2.8	40.0
Property and business services	7.8	7.9	9.9	9.5	9.5	9.4	124.4
Government administration and defence	101.9	102.7	95.7	99.8	98.2	98.5	1 081.0
Education	115.0	129.9	132.1	132.0	109.5	129.9	1 260.5
Health and community services	110.3	110.3	109.7	110.5	111.4	112.5	1 194.2
Cultural and recreational services	10.9	11.2	10.6	9.6	9.7	10.1	119.4
Personal and other services	32.0	32.0	32.0	32.2	32.2	32.7	407.8
All industries(a)	454.1	469.9	465.4	467.8	443.7	466.4	5 165.3
PRIVATE AND PUBLIC							
Agriculture, forestry and fishing	1.8	1.6	1.6	1.6	1.7	2.2	* 24.8
Mining	11.1	12.0	12.2	12.2	10.8	11.4	235.0
Manufacturing	275.1	264.2	268.3	268.8	261.1	266.3	2 949.9
Electricity, gas and water supply	17.4	15.0	14.4	13.7	13.9	14.1	228.6
Construction	132.8	148.9	152.3	143.4	147.9	140.7	1 417.3
Wholesale trade	165.3	167.2	163.7	159.3	157.1	171.6	1 785.1
Retail trade	339.3	319.5	314.7	325.3	333.4	326.4	1 785.3
Accommodation, cafes and restaurants	137.7	142.5	150.7	147.8	132.2	128.7	732.0
Transport and storage	106.8	103.4	106.6	108.5	104.7	114.3	1 327.6
Communication services	46.8	50.9	48.8	45.5	45.1	47.8	671.4
Finance and insurance	116.2	117.9	107.3	113.6	108.8	113.0	1 771.8
Property and business services	318.8	340.1	348.8	356.3	335.7	380.6	4 187.7
Government administration and defence	101.9	102.7	95.7	99.8	98.2	98.5	1 081.0
Education	172.0	195.3	195.5	192.7	170.9	190.8	1 778.7
Health and community services	257.9	267.0	270.8	277.3	277.5	282.7	2 317.6
Cultural and recreational services	64.0	76.3	75.7	59.0	58.6	62.9	518.3
Personal and other services	94.5	96.1	102.2	97.4	95.2	89.8	809.0
All industries	2 359.4	2 420.7	2 429.4	2 422.3	2 352.9	2 441.7	23 621.3

(a) Includes employees classified to Mining, Wholesale trade, Retail trade and Accommodation, cafes and restaurants.

WAGE AND SALARY EARNERS, Sector—Victoria: **Original**

Industry	NUMBER OF EMPLOYEES.....						GROSS EARNINGS
	February 2000	May 2000	August 2000	November 2000	February 2001	May 2001	June Qtr 2001
	'000	'000	'000	'000	'000	'000	\$m
PRIVATE							
Mining	n.p.	n.p.	n.p.	n.p.	n.p.	n.p.	n.p.
Manufacturing	298.7	297.8	294.1	284.4	287.1	290.4	3 200.8
Electricity, gas and water supply	7.2	7.1	6.3	4.8	4.8	5.3	92.0
Construction	86.9	82.2	82.6	81.0	80.9	93.6	836.7
Wholesale trade	133.2	130.4	130.4	135.2	134.1	124.4	1 471.6
Retail trade	259.6	255.6	267.8	277.1	276.0	287.9	1 500.6
Accommodation, cafes and restaurants	69.2	74.2	77.4	83.5	84.7	89.9	422.7
Transport and storage	62.9	68.0	61.4	64.2	60.0	62.7	647.5
Communication services	n.p.	n.p.	n.p.	n.p.	n.p.	n.p.	n.p.
Finance and insurance	77.1	78.0	80.5	82.8	78.2	76.6	1 071.7
Property and business services	293.3	300.2	338.8	353.0	344.7	354.5	3 311.8
Education	51.2	52.3	52.3	51.6	50.4	58.4	485.9
Health and community services	108.9	110.8	121.7	134.1	132.2	143.4	967.2
Cultural and recreational services	40.9	41.1	39.0	42.5	37.9	45.1	264.3
Personal and other services	41.3	39.9	46.1	47.4	49.4	46.6	317.4
All industries	1 545.0	1 552.1	1 611.7	1 654.7	1 634.2	1 691.6	14 743.0
PUBLIC							
Agriculture, forestry and fishing	—	—	—	—	—	—	—
Manufacturing	2.7	2.7	0.3	0.2	0.2	0.2	2.5
Electricity, gas and water supply	4.1	4.0	3.5	4.0	4.1	4.1	50.4
Construction	2.4	2.3	2.3	2.3	2.3	2.3	29.7
Transport and storage	5.6	3.2	1.1	1.2	1.1	1.2	20.7
Communication services	n.p.	n.p.	n.p.	n.p.	n.p.	n.p.	n.p.
Finance and insurance	1.9	1.9	1.2	1.2	1.3	1.7	21.5
Property and business services	5.5	5.2	6.0	6.0	5.6	6.6	74.8
Government administration and defence	61.1	62.7	62.8	62.5	64.4	64.1	635.4
Education	95.3	101.5	105.8	105.0	94.6	109.3	1 109.8
Health and community services	74.3	73.8	75.4	76.3	78.5	81.8	869.6
Cultural and recreational services	5.4	6.2	6.0	6.0	6.5	7.0	63.2
Personal and other services	18.4	19.2	18.3	18.4	18.3	19.4	229.6
All industries(a)	303.8	309.8	309.5	309.4	302.7	323.0	3 397.0
PRIVATE AND PUBLIC							
Agriculture, forestry and fishing	—	—	—	—	—	—	—
Mining	4.3	4.0	4.1	4.0	3.9	3.8	56.9
Manufacturing	301.5	300.5	294.4	284.6	287.3	290.6	3 203.4
Electricity, gas and water supply	11.3	11.1	9.8	8.8	8.9	9.4	142.4
Construction	89.3	84.5	84.9	83.3	83.2	95.9	866.4
Wholesale trade	133.7	130.8	130.4	135.2	134.1	124.4	1 471.6
Retail trade	259.6	255.6	267.8	277.1	276.0	288.0	1 501.0
Accommodation, cafes and restaurants	69.3	74.3	77.4	83.6	84.8	89.9	422.8
Transport and storage	68.4	71.2	62.5	65.3	61.1	63.9	668.2
Communication services	36.8	36.8	36.1	35.2	35.7	34.3	385.2
Finance and insurance	79.1	80.0	81.7	84.0	79.5	78.3	1 093.3
Property and business services	298.8	305.4	344.8	359.0	350.3	361.0	3 386.6
Government administration and defence	61.1	62.7	62.8	62.5	64.4	64.1	635.4
Education	146.5	153.9	158.1	156.7	145.0	167.7	1 595.6
Health and community services	183.3	184.6	197.1	210.4	210.7	225.2	1 836.7
Cultural and recreational services	46.3	47.3	45.0	48.5	44.4	52.0	327.4
Personal and other services	59.7	59.1	64.4	65.8	67.7	66.0	547.0
All industries	1 848.9	1 861.9	1 921.3	1 964.2	1 936.9	2 014.6	18 140.0

(a) Includes employees classified to Mining, Wholesale trade, Retail trade and Accommodation, cafes and restaurants.

WAGE AND SALARY EARNERS, Sector—Queensland: **Original**

Industry	NUMBER OF EMPLOYEES.....						GROSS EARNINGS
	February 2000	May 2000	August 2000	November 2000	February 2001	May 2001	June Qtr 2001
	'000	'000	'000	'000	'000	'000	\$m
PRIVATE							
Mining	15.0	16.6	15.6	14.7	14.6	15.0	303.2
Manufacturing	140.6	146.8	140.9	142.0	139.9	146.1	1 368.3
Electricity, gas and water supply	n.p.	n.p.	n.p.	n.p.	n.p.	n.p.	n.p.
Construction	55.7	60.9	61.5	64.3	64.9	55.8	487.1
Wholesale trade	114.0	110.5	99.0	98.3	102.4	97.0	917.1
Retail trade	208.2	201.8	197.4	210.8	204.5	217.0	1 131.2
Accommodation, cafes and restaurants	79.2	75.3	74.8	78.6	70.8	75.9	400.1
Transport and storage	45.0	44.8	53.1	49.8	* 56.0	* 62.0	* 634.2
Communication services	n.p.	n.p.	n.p.	n.p.	n.p.	n.p.	n.p.
Finance and insurance	35.5	36.8	39.0	40.8	42.8	42.8	489.8
Property and business services	123.7	140.0	153.9	157.5	150.5	162.8	1 400.6
Education	28.2	31.7	35.4	34.8	31.9	34.0	271.1
Health and community services	98.2	100.1	93.9	99.9	102.2	104.7	694.3
Cultural and recreational services	31.2	32.4	33.1	32.8	32.4	29.1	182.1
Personal and other services	36.6	31.2	30.6	31.0	34.7	23.6	130.1
All industries	1 016.3	1 032.7	1 031.5	1 058.5	1 051.3	1 069.0	8 442.3
PUBLIC							
Agriculture, forestry and fishing	* 1.6	* 1.7	1.2	0.8	0.9	1.0	8.9
Manufacturing	0.7	0.7	0.7	0.7	0.2	0.2	2.4
Electricity, gas and water supply	n.p.	n.p.	n.p.	n.p.	n.p.	n.p.	n.p.
Construction	8.4	8.7	11.6	11.4	10.9	10.9	122.1
Transport and storage	18.8	18.8	18.2	18.0	17.6	17.6	217.6
Communication services	n.p.	n.p.	n.p.	n.p.	n.p.	n.p.	n.p.
Finance and insurance	1.4	1.4	1.4	1.4	1.4	1.5	21.0
Property and business services	6.0	6.0	4.8	4.4	4.3	5.1	58.2
Government administration and defence	63.8	64.7	65.2	65.3	68.2	68.8	668.6
Education	93.9	92.4	91.9	91.2	86.9	91.2	829.9
Health and community services	50.1	50.2	50.4	50.9	51.2	54.1	590.8
Cultural and recreational services	3.4	3.4	3.7	3.7	2.8	3.1	39.8
Personal and other services	18.1	18.1	18.3	17.9	17.9	18.1	215.4
All industries(a)	292.7	292.4	294.5	292.8	288.9	294.7	3 041.5
PRIVATE AND PUBLIC							
Agriculture, forestry and fishing	* 1.6	* 1.7	1.2	0.8	0.9	1.0	8.9
Mining	15.0	16.6	15.6	14.7	14.6	15.0	303.2
Manufacturing	141.3	147.5	141.6	142.7	140.2	146.3	1 370.7
Electricity, gas and water supply	13.9	13.6	14.1	13.8	13.9	10.7	141.9
Construction	64.1	69.7	73.1	75.7	75.8	66.7	609.3
Wholesale trade	114.2	110.5	99.1	98.4	102.5	97.1	917.9
Retail trade	208.3	201.9	197.5	210.9	204.6	217.0	1 134.3
Accommodation, cafes and restaurants	79.3	75.3	74.8	78.7	70.9	76.0	400.2
Transport and storage	63.8	63.6	71.3	67.7	73.6	79.6	851.8
Communication services	17.3	16.3	16.2	16.2	15.9	15.5	154.1
Finance and insurance	36.9	38.3	40.4	42.2	44.3	44.3	510.8
Property and business services	129.7	146.0	158.7	161.9	154.8	167.9	1 458.8
Government administration and defence	63.8	64.7	65.2	65.3	68.2	68.8	668.6
Education	122.1	124.1	127.3	126.0	118.8	125.1	1 101.0
Health and community services	148.4	150.3	144.2	150.8	153.4	158.8	1 285.1
Cultural and recreational services	34.6	35.8	36.8	36.5	35.2	32.2	221.8
Personal and other services	54.8	49.3	48.9	48.9	52.6	41.7	345.5
All industries	1 309.1	1 325.2	1 326.0	1 351.3	1 340.1	1 363.7	11 483.8

(a) Includes employees classified to Mining, Wholesale trade, Retail trade and Accommodation, cafes and restaurants.

WAGE AND SALARY EARNERS, Sector—South Australia: **Original**

Industry	NUMBER OF EMPLOYEES.....						GROSS EARNINGS
	February 2000	May 2000	August 2000	November 2000	February 2001	May 2001	June Qtr 2001
	'000	'000	'000	'000	'000	'000	\$m
PRIVATE							
Mining	3.7	3.5	2.4	2.4	2.5	3.8	68.1
Manufacturing	79.8	76.6	80.0	76.5	75.1	76.7	756.6
Electricity, gas and water supply	1.0	1.0	2.3	2.5	2.5	2.5	32.6
Construction	32.9	33.1	34.1	n.p.	31.4	* 22.9	* 191.6
Wholesale trade	41.3	42.3	42.9	44.5	40.5	44.5	362.7
Retail trade	79.9	76.5	72.9	81.1	78.3	81.8	428.0
Accommodation, cafes and restaurants	26.1	27.8	27.3	27.2	31.9	37.0	167.4
Transport and storage	20.7	22.7	20.9	22.4	22.4	22.3	185.1
Communication services	0.8	0.8	1.2	n.p.	1.4	1.3	8.6
Finance and insurance	15.6	15.0	16.2	16.4	15.9	18.6	185.1
Property and business services	38.0	37.7	40.7	41.8	42.9	49.5	406.7
Education	12.9	13.3	13.8	13.6	13.1	14.3	108.0
Health and community services	44.4	45.9	46.2	45.6	45.3	49.3	324.3
Cultural and recreational services	9.7	9.6	* 8.2	8.8	* 6.7	* 7.4	* 38.1
Personal and other services	13.6	15.1	15.3	12.7	11.8	12.4	71.7
All industries	420.3	421.0	424.4	428.5	421.8	444.4	3 334.5
PUBLIC							
Agriculture, forestry and fishing	n.p.	n.p.	n.p.	0.3	n.p.	n.p.	n.p.
Manufacturing	—	—	—	—	—	—	—
Electricity, gas and water supply	3.2	3.1	1.8	1.8	1.8	1.8	28.0
Construction	1.3	1.8	1.7	n.p.	1.6	1.7	21.7
Transport and storage	2.7	1.3	1.4	1.4	1.5	1.4	19.2
Communication services	n.p.	n.p.	n.p.	n.p.	n.p.	n.p.	n.p.
Finance and insurance	0.5	0.5	0.5	0.6	0.5	0.2	2.2
Property and business services	1.6	1.7	1.7	1.7	1.7	1.9	20.9
Government administration and defence	26.5	26.2	26.0	26.1	26.0	26.4	288.2
Education	32.3	35.3	36.0	36.4	33.6	35.5	341.7
Health and community services	27.4	27.9	27.7	27.7	27.7	28.0	256.8
Cultural and recreational services	1.8	1.9	3.3	3.2	3.0	3.3	33.0
Personal and other services	7.2	7.4	7.4	7.5	7.5	7.5	88.9
All industries(a)	111.2	113.7	114.1	113.8	111.0	113.5	1 161.5
PRIVATE AND PUBLIC							
Agriculture, forestry and fishing	n.p.	n.p.	n.p.	0.3	n.p.	n.p.	n.p.
Mining	3.7	3.5	2.4	2.4	2.5	3.8	68.1
Manufacturing	79.8	76.6	80.0	76.6	75.1	76.7	756.6
Electricity, gas and water supply	4.2	4.2	4.2	4.3	4.3	4.4	60.6
Construction	34.2	34.9	35.9	32.5	33.0	* 24.5	* 213.3
Wholesale trade	41.4	42.3	42.9	44.5	40.5	44.5	362.7
Retail trade	79.9	76.6	72.9	81.1	78.3	81.8	428.0
Accommodation, cafes and restaurants	26.2	27.9	27.5	27.3	32.0	37.1	168.1
Transport and storage	23.5	24.0	22.3	23.9	23.9	23.7	204.3
Communication services	n.p.	n.p.	n.p.	7.3	n.p.	n.p.	n.p.
Finance and insurance	16.2	15.5	16.8	17.0	16.5	18.8	187.3
Property and business services	39.6	39.4	42.4	43.5	44.6	51.4	427.6
Government administration and defence	26.5	26.2	26.0	26.1	26.0	26.4	288.2
Education	45.2	48.7	49.8	50.0	46.7	49.8	449.7
Health and community services	71.9	73.7	73.9	73.3	73.0	77.2	581.1
Cultural and recreational services	11.5	11.6	11.5	12.0	9.7	10.7	71.1
Personal and other services	20.8	22.5	22.8	20.2	19.3	19.9	160.6
All industries	531.5	534.8	538.5	542.3	532.7	557.8	4 496.0

(a) Includes employees classified to Mining, Wholesale trade, Retail trade and Accommodation, cafes and restaurants.

WAGE AND SALARY EARNERS, Sector—Western Australia: **Original**

Industry	NUMBER OF EMPLOYEES.....						GROSS EARNINGS
	February 2000	May 2000	August 2000	November 2000	February 2001	May 2001	June Qtr 2001
	'000	'000	'000	'000	'000	'000	\$m
PRIVATE							
Mining	26.5	26.6	26.5	29.4	31.0	30.7	644.5
Manufacturing	n.p.	n.p.	n.p.	n.p.	n.p.	n.p.	n.p.
Electricity, gas and water supply	n.p.	n.p.	n.p.	n.p.	n.p.	n.p.	n.p.
Construction	43.6	42.0	43.0	36.5	38.6	40.9	439.1
Wholesale trade	47.7	52.2	54.5	55.9	58.1	54.2	470.0
Retail trade	104.8	119.8	119.1	130.4	129.3	130.6	693.7
Accommodation, cafes and restaurants	37.8	42.3	38.7	38.9	36.3	36.7	142.2
Transport and storage	25.2	24.7	26.8	28.3	28.4	25.0	265.9
Communication services	n.p.	n.p.	n.p.	n.p.	n.p.	n.p.	n.p.
Finance and insurance	22.9	23.6	24.5	23.5	21.1	20.4	221.5
Property and business services	97.8	101.3	99.8	99.3	97.5	93.0	816.6
Education	16.7	17.9	17.5	18.2	17.8	18.1	145.8
Health and community services	48.6	51.4	53.2	53.4	58.6	62.6	480.1
Cultural and recreational services	15.8	14.5	15.2	14.7	17.0	13.3	73.2
Personal and other services	19.4	17.8	17.0	18.6	18.5	22.9	132.3
All industries	575.3	603.2	604.4	617.8	621.5	616.0	5 273.7
PUBLIC							
Agriculture, forestry and fishing	1.8	1.8	1.7	1.6	1.7	1.7	20.8
Manufacturing	n.p.	n.p.	n.p.	n.p.	n.p.	n.p.	n.p.
Electricity, gas and water supply	n.p.	n.p.	n.p.	n.p.	n.p.	n.p.	n.p.
Construction	1.6	1.6	1.3	1.3	1.2	1.2	16.5
Transport and storage	2.4	2.5	2.3	2.3	1.2	1.2	17.8
Communication services	n.p.	n.p.	n.p.	n.p.	n.p.	n.p.	n.p.
Finance and insurance	0.7	0.7	0.7	0.7	0.7	0.7	7.5
Property and business services	2.7	2.7	2.7	2.7	2.7	4.4	46.7
Government administration and defence	31.0	31.2	30.1	30.6	37.6	31.0	283.8
Education	49.0	48.6	53.9	54.1	46.0	52.0	421.2
Health and community services	28.5	28.7	30.5	31.1	31.3	32.3	293.4
Cultural and recreational services	2.1	2.1	2.1	2.2	2.1	2.2	20.1
Personal and other services	12.8	12.8	12.9	13.4	13.2	13.4	141.1
All industries(a)	147.1	146.6	151.4	152.9	150.6	152.5	1 414.1
PRIVATE AND PUBLIC							
Agriculture, forestry and fishing	1.8	1.8	1.7	1.6	1.7	1.7	20.8
Mining	26.5	26.6	26.5	29.4	31.0	30.7	644.5
Manufacturing	67.4	67.8	66.8	69.0	67.2	64.4	712.4
Electricity, gas and water supply	5.7	5.7	5.7	5.6	5.7	5.7	88.0
Construction	45.2	43.6	44.3	37.7	39.8	42.1	455.6
Wholesale trade	47.9	52.4	54.7	56.1	58.3	54.4	472.1
Retail trade	104.8	119.8	119.1	130.4	129.4	130.7	693.8
Accommodation, cafes and restaurants	37.9	42.5	38.8	39.0	36.4	36.9	142.9
Transport and storage	27.6	27.2	29.1	30.6	29.7	26.2	283.7
Communication services	9.2	9.1	9.3	8.7	8.8	9.4	90.7
Finance and insurance	23.7	24.3	25.1	24.1	21.8	21.1	229.0
Property and business services	100.6	104.0	102.5	102.0	100.2	97.4	863.4
Government administration and defence	31.0	31.2	30.1	30.6	37.6	31.0	283.8
Education	65.7	66.5	71.3	72.3	63.8	70.1	567.0
Health and community services	77.1	80.1	83.7	84.5	89.9	94.9	773.5
Cultural and recreational services	17.9	16.6	17.4	16.9	19.1	15.6	93.3
Personal and other services	32.2	30.6	29.9	32.0	31.7	36.4	273.4
All industries	722.4	749.8	755.8	770.6	772.1	768.5	6 687.8

(a) Includes employees classified to Mining, Wholesale trade, Retail trade and Accommodation, cafes and restaurants.

WAGE AND SALARY EARNERS, Sector—Tasmania: **Original**

Industry	NUMBER OF EMPLOYEES.....						GROSS EARNINGS
	February 2000	May 2000	August 2000	November 2000	February 2001	May 2001	June Qtr 2001
	'000	'000	'000	'000	'000	'000	\$m
PRIVATE							
Mining	* 2.0	1.7	1.6	1.5	1.5	1.6	25.2
Manufacturing	n.p.	n.p.	n.p.	n.p.	n.p.	n.p.	n.p.
Electricity, gas and water supply	—	—	—	—	—	—	—
Construction	4.2	4.0	5.3	n.p.	n.p.	n.p.	n.p.
Wholesale trade	* 12.5	7.7	7.1	7.4	7.6	* 9.3	* 71.7
Retail trade	27.2	26.5	27.7	26.2	27.4	29.4	142.2
Accommodation, cafes and restaurants	8.4	9.7	10.3	11.5	11.2	10.8	45.9
Transport and storage	5.0	5.5	4.7	4.9	4.5	6.0	42.3
Communication services	n.p.	n.p.	n.p.	n.p.	n.p.	n.p.	n.p.
Finance and insurance	4.0	3.8	4.8	3.9	3.7	4.5	38.2
Property and business services	* 11.0	10.4	* 9.5	* 12.3	12.9	13.8	95.4
Education	3.0	3.6	3.4	3.1	2.6	4.1	20.8
Health and community services	12.9	14.2	14.1	13.2	13.4	15.1	90.4
Cultural and recreational services	2.9	4.5	2.8	3.0	2.3	2.7	* 12.6
Personal and other services	* 4.0	3.8	4.3	4.9	* 5.2	* 6.6	* 31.6
All industries	118.8	116.2	115.0	118.0	118.2	129.2	863.9
PUBLIC							
Agriculture, forestry and fishing	0.6	0.6	0.6	0.6	0.6	0.6	6.4
Manufacturing	n.p.	n.p.	n.p.	n.p.	n.p.	n.p.	n.p.
Electricity, gas and water supply	1.9	1.8	1.8	1.8	1.8	1.9	27.1
Construction	0.1	0.1	0.2	n.p.	n.p.	n.p.	n.p.
Transport and storage	0.8	0.8	0.8	0.9	0.9	1.0	9.8
Communication services	n.p.	n.p.	n.p.	n.p.	n.p.	n.p.	n.p.
Finance and insurance	0.2	0.2	0.2	0.2	0.2	0.2	2.3
Property and business services	0.5	0.5	0.5	0.5	0.5	0.5	6.2
Government administration and defence	9.5	9.4	8.4	8.7	8.7	8.9	86.7
Education	12.4	14.4	14.7	14.8	12.4	14.6	117.5
Health and community services	8.2	8.6	8.4	8.7	8.9	8.8	65.4
Cultural and recreational services	0.4	0.4	1.0	1.0	1.1	1.1	11.1
Personal and other services	2.7	2.7	2.7	2.7	2.7	2.8	30.7
All industries(a)	39.1	41.5	41.2	42.1	39.9	42.4	383.4
PRIVATE AND PUBLIC							
Agriculture, forestry and fishing	0.6	0.6	0.6	0.6	0.6	0.6	6.4
Mining	* 2.0	1.7	1.6	1.5	1.5	1.6	25.2
Manufacturing	21.2	20.4	18.7	19.6	19.3	19.4	194.5
Electricity, gas and water supply	1.9	1.8	1.8	1.8	1.8	1.9	27.1
Construction	4.3	4.1	5.5	6.0	6.0	5.5	* 47.6
Wholesale trade	* 12.6	7.7	7.1	7.5	7.6	* 9.3	* 72.4
Retail trade	27.2	26.5	27.7	26.2	27.4	29.4	142.2
Accommodation, cafes and restaurants	8.5	9.7	10.3	11.5	11.2	10.8	46.2
Transport and storage	5.8	6.3	5.5	5.8	5.5	7.0	52.1
Communication services	2.3	2.2	2.6	2.6	2.5	2.5	24.7
Finance and insurance	4.3	4.1	5.0	4.1	4.0	4.7	40.4
Property and business services	* 11.5	10.9	10.0	* 12.9	13.4	14.3	101.6
Government administration and defence	9.5	9.4	8.4	8.7	8.7	8.9	86.7
Education	15.4	18.0	18.1	17.9	15.1	18.6	138.3
Health and community services	21.1	22.9	22.5	22.0	22.3	24.0	155.9
Cultural and recreational services	3.3	4.9	3.8	3.9	3.4	3.7	23.7
Personal and other services	6.7	6.5	6.9	7.6	7.9	9.3	62.2
All industries	157.9	157.7	156.2	160.1	158.2	171.6	1 247.3

(a) Includes employees classified to Mining, Wholesale trade, Retail trade and Accommodation, cafes and restaurants.

WAGE AND SALARY EARNERS, Industry—Territories: **Original**

Industry	NUMBER OF EMPLOYEES.....						GROSS EARNINGS
	February 2000	May 2000	August 2000	November 2000	February 2001	May 2001	June Qtr 2001
	'000	'000	'000	'000	'000	'000	\$m
NORTHERN TERRITORY							
Agriculture, forestry and fishing	n.p.	n.p.	n.p.	—	—	—	—
Mining	1.9	1.9	1.8	1.7	1.6	1.7	32.4
Manufacturing	2.8	2.7	3.1	2.8	3.2	3.2	36.7
Electricity, gas and water supply	0.7	0.7	0.7	n.p.	n.p.	n.p.	n.p.
Construction	2.7	3.0	3.0	3.6	3.6	4.2	40.2
Wholesale trade	4.2	4.2	3.7	4.1	4.0	4.7	41.5
Retail trade	10.9	12.4	13.2	11.6	11.2	11.0	68.4
Accommodation, cafes and restaurants	4.3	5.1	5.1	4.6	4.5	6.7	42.7
Transport and storage	* 5.1	5.1	* 5.0	* 5.5	* 5.4	4.2	43.9
Communication services	n.p.	n.p.	n.p.	n.p.	n.p.	n.p.	n.p.
Finance and insurance	1.0	0.9	0.9	0.8	0.8	1.1	9.7
Property and business services	7.8	8.5	* 9.0	* 8.9	* 9.6	* 9.6	* 152.2
Government administration and defence	8.1	7.9	7.0	7.1	7.0	7.1	65.2
Education	6.6	7.1	7.2	7.5	6.6	7.3	67.7
Health and community services	9.0	9.0	9.3	9.0	9.0	9.3	82.1
Cultural and recreational services	2.9	3.2	3.3	3.1	2.9	3.1	24.4
Personal and other services	5.9	6.2	6.7	6.6	6.4	6.8	49.6
All industries	74.8	78.7	80.0	78.4	77.6	81.6	774.9
AUSTRALIAN CAPITAL TERRITORY							
Agriculture, forestry and fishing	n.p.	n.p.	n.p.	—	—	—	—
Mining	—	—	—	—	—	—	0.6
Manufacturing	3.3	3.8	4.0	2.7	5.0	3.8	35.4
Electricity, gas and water supply	1.0	1.0	1.0	n.p.	n.p.	n.p.	n.p.
Construction	* 5.0	* 5.4	* 5.0	* 4.4	* 5.0	5.4	61.0
Wholesale trade	3.6	3.6	3.9	3.7	3.5	3.3	32.5
Retail trade	18.8	18.6	17.7	19.6	18.0	16.3	92.0
Accommodation, cafes and restaurants	7.6	8.2	8.3	8.5	7.7	7.9	44.5
Transport and storage	3.6	3.5	2.9	3.2	3.0	2.7	27.4
Communication services	n.p.	n.p.	n.p.	n.p.	n.p.	n.p.	n.p.
Finance and insurance	3.2	2.9	3.3	3.4	3.4	4.1	41.6
Property and business services	24.3	27.2	22.4	22.7	25.3	24.1	* 302.9
Government administration and defence	40.4	41.1	39.8	39.7	40.2	41.1	540.2
Education	14.0	15.6	16.2	16.0	14.1	15.1	148.0
Health and community services	11.9	12.5	13.2	14.6	13.9	15.0	123.4
Cultural and recreational services	5.5	5.4	6.2	7.0	7.7	7.6	60.1
Personal and other services	6.9	7.1	7.0	7.2	6.9	7.3	56.3
All industries	150.7	157.4	152.4	155.4	155.9	156.2	1 594.9

WAGE AND SALARY EARNERS, Private Sector—Employer Size(a): **Original**

NUMBER OF EMPLOYEES—MAY 2001

GROSS EARNINGS—JUNE QTR 2001

	NUMBER OF EMPLOYEES—MAY 2001				GROSS EARNINGS—JUNE QTR 2001			
	<i>Less than 20 employees</i>	<i>20 to 99 employees</i>	<i>100 or more employees</i>	<i>Total</i>	<i>Less than 20 employees</i>	<i>20 to 99 employees</i>	<i>100 or more employees</i>	<i>Total</i>
	'000	'000	'000	'000	\$m	\$m	\$m	\$m
INDUSTRY								
Mining	n.p.	n.p.	n.p.	n.p.	n.p.	n.p.	n.p.	n.p.
Manufacturing	208.6	226.1	434.8	869.4	1 651.8	2 155.3	5 439.5	9 246.6
Electricity, gas and water supply	0.5	1.0	10.2	11.6	6.9	14.3	167.5	188.7
Construction	252.5	52.5	55.1	360.0	1 940.2	637.6	816.8	3 394.7
Wholesale trade	214.3	164.4	130.1	508.9	1 924.8	1 695.2	1 532.2	5 152.1
Retail trade	462.8	186.1	451.2	1 100.0	2 605.8	1 083.7	2 149.7	5 839.2
Accommodation, cafes and restaurants	153.9	133.4	106.3	393.6	599.0	704.7	693.4	1 997.1
Transport and storage	98.7	* 67.0	114.5	280.2	765.0	* 673.3	1 460.6	2 898.9
Communication services	n.p.	n.p.	n.p.	n.p.	n.p.	n.p.	n.p.	n.p.
Finance and insurance	49.5	26.5	201.1	277.1	469.2	478.3	2 828.8	3 776.2
Property and business services	466.1	290.4	317.1	1 073.5	4 099.9	3 043.6	3 341.4	10 484.9
Education	38.1	59.7	97.7	195.6	234.7	463.9	898.9	1 597.6
Health and community services	207.2	106.2	246.9	560.3	1 474.6	597.7	1 713.8	3 786.1
Cultural and recreational services	50.9	48.3	57.6	156.7	241.7	289.0	479.9	1 010.6
Personal and other services	101.4	35.0	42.0	178.5	562.9	238.0	331.1	1 132.0
All industries	2 320.3	1 409.7	2 340.1	6 070.0	16 794.9	12 284.5	23 307.7	52 387.1

STATES AND TERRITORIES

New South Wales	766.1	382.6	826.6	1 975.3	5 779.2	3 910.5	8 766.4	18 456.1
Victoria	620.2	391.6	679.7	1 691.6	4 442.9	3 261.6	7 038.4	14 743.0
Queensland	418.0	273.4	377.6	1 069.0	2 861.5	2 300.8	3 279.9	8 442.3
South Australia	151.9	136.2	156.2	444.4	971.9	1 015.2	1 347.4	3 334.5
Western Australia	245.3	151.1	219.7	616.0	1 901.1	1 152.7	2 220.0	5 273.7
Tasmania	56.3	32.4	40.6	129.2	313.6	221.1	329.2	863.9
Northern Territory	22.0	21.2	14.7	57.9	171.0	* 237.5	118.2	526.7
Australian Capital Territory	40.4	21.1	25.1	86.6	353.7	185.0	208.3	747.0
Australia	2 320.3	1 409.7	2 340.1	6 070.0	16 794.9	12 284.5	23 307.7	52 387.1

(a) See paragraph 15 of the Explanatory Notes, and the Glossary.

EXPLANATORY NOTES

INTRODUCTION

1 This publication contains estimates from the quarterly Survey of Employment and Earnings (SEE) which was introduced in the September quarter 1983. The survey is designed to obtain, from employer units, information on numbers of wage and salary earners employed each month and their quarterly earnings.

SCOPE

2 All wage and salary earners who received pay in any pay period ending within the quarter were represented in the survey, except:

- members of the Australian permanent defence forces;
- employees of businesses in the private sector primarily engaged in Agriculture, forestry and fishing;
- employees in private households employing staff;
- employees of overseas embassies, consulates, etc.;
- employees based outside Australia; and
- employees on workers' compensation who are not paid through the payroll.

3 An indicator of the number of wage and salary earners out of scope as at June 2000 is shown in the following list:

New South Wales	69,800
Victoria	42,900
Queensland	63,900
South Australia	21,200
Western Australia	30,600
Tasmania	10,300
Northern Territory	9,800
Australian Capital Territory	5,700
Australia	254,200

4 Estimates of the number of employees in private sector Agriculture, forestry and fishing and Private households employing staff were derived from the Labour Force Survey (LFS). Data relating to the number of permanent defence force members are based upon information supplied to the ABS by the Department of Defence.

5 Also excluded are the following persons who are not regarded as employees for the purposes of this survey:

- directors who are not paid a salary;
- proprietors/partners of unincorporated businesses; and
- self-employed persons such as subcontractors, owner/drivers, consultants and persons paid solely by commission without a retainer.

SURVEY METHODOLOGY AND DESIGN

6 A sample of approximately 10,000 employer units is selected from the ABS Business Register to ensure adequate State and industry representation. Of these, approximately 7,500 are in the private sector and 2,500 are in the public sector. The survey is conducted by mail each quarter. However, data for a number of Commonwealth, Australian Capital Territory and Northern Territory government departments, and a small number of large private businesses, are collected electronically.

7 The statistical unit for the survey comprises all activities of an employer in a particular State or Territory. Each statistical unit is classified to an industry which reflects the predominant activity of the business in the State or Territory. See paragraphs 10–13 for more information on classification by industry.

EXPLANATORY NOTES *continued*

SURVEY METHODOLOGY AND DESIGN *continued*

8 Information on monthly number of employees and quarterly earnings is collected each quarter. For the first and last month of each quarter, only the total number of employees is collected; for the mid-month of each quarter, the number of full-time and part-time employees are collected. Up until May 1996 the number of male and female employees was also collected.

9 Public sector statistical units are stratified by State, industry and number of employees. Private sector units are further stratified by institutional sector classification. An equal probability sample is selected from each stratum.

SURVEY DESIGN CHANGES

10 From the March quarter 1997, the industrial classification used in the sample design of the SEE is the Australian and New Zealand Standard Industrial Classification; for more details refer to *Australian and New Zealand Standard Industrial Classification (ANZSIC), 1993* (Cat. no. 1292.0). It replaced the Australian Standard Industrial Classification (ASIC) previously used.

11 A consequence of the introduction of ANZSIC is that in the March quarter 1997 there is a higher than normal proportion of newly selected units in the sample causing higher than normal standard errors on estimated December quarter 1996 to March quarter 1997 movements. Hence caution should be used when comparing movements between these two quarters with movements between previous and subsequent quarters.

12 For further information see paragraphs 10–15 of the Explanatory Notes in the March quarter 1997 issue of this publication.

HISTORICAL ANZSIC ESTIMATES

13 Previously published ASIC industry estimates have been recompiled on an equivalent ANZSIC basis back to the September quarter 1983. The historical ANZSIC estimates to September 1994 were produced by developing a concordance between ASIC and ANZSIC. The ANZSIC estimates from the December quarter 1994 to the December quarter 1996 have been produced by recoding survey unit data from ASIC to ANZSIC. Due to the sample being designed on an ASIC basis from the September quarter 1983 to the December quarter 1996, ANZSIC estimates for this period are subject to higher than normal standard errors.

STANDARD INSTITUTIONAL SECTOR CLASSIFICATION

14 Institutional units are classified by broad economic functions according to the Standard Institutional Sector Classification of Australia which is a key component of the general national accounting framework; for more details refer to *Standard Institutional Sector Classification of Australia (SISCA), 1987* (Cat. no. 1218.0). Public sector data split by the SISCA classification are available on request.

EMPLOYER SIZE CLASSIFICATION

15 Data presented in table 20 show the distribution of employees in employer units over three size ranges. Over time, the composition of these categories will vary as some employer units migrate from one size group to another due to changes in the number of their employees.

RELIABILITY OF ESTIMATES

16 Estimates are subject to sampling and non-sampling errors. For more information refer to the Technical Notes.

COVERAGE

17 Adjustments are included in the estimates to allow for lags in processing new businesses to the ABS Business Register and the omission of some mainly small private sector businesses from the Business Register. These adjustments were introduced in the March quarter 1997 issue and were backcast to the introduction of the series in 1983. For more details refer to the March quarter 1997 issue or the *Information Paper: Improvements to ABS Economic Statistics, 1997* (Cat. no. 1357.0).

INTERPRETATION OF
ESTIMATES OF MOVEMENTS

18 Estimates of wage and salary earners are presented in this publication for the middle month of the quarter. Monthly data are available on request. The survey is conducted quarterly and the sample of employer units is updated each quarter to reflect changes in the Register, from which the sample is selected. These changes arise from the emergence of new businesses, takeovers and mergers, changes to industry classification, changes in the number of employees, and businesses which have ceased operations.

19 Estimates of movements are also affected by:

- changes in the reported number of employees of selected businesses ;
- the controlled rotation of the sample; and
- the privatisation of public trading and public financial enterprises.

SEASONAL ADJUSTMENT

20 Seasonal adjustment is a means of removing the estimated effects of normal seasonal variation from the series so that the effects of other influences can be more clearly recognised. Seasonal adjustment does not aim to remove the irregular or non-seasonal influences which may be present in any particular series. Influences that are volatile or unsystematic can still make it difficult to interpret the movement of the series even after adjustment for seasonal variation. This means that quarter-to-quarter movements of seasonally adjusted estimates may not be reliable indicators of trend behaviour.

21 The series have been seasonally adjusted from July 1983 and the historical series can be made available on request. The seasonal factors are reviewed annually to take account of each additional year's original data. The most recent review, using original estimates to the December quarter 2000, took place in time for inclusion in the March quarter 2001 estimates.

22 Details about the method of seasonal adjustment of these series are available on request.

TREND ESTIMATES

23 The ABS considers that trend estimates provide a more reliable guide to the underlying direction of the data, and are more suitable than either the seasonally adjusted or original estimates for most business decisions and policy advice.

24 The trend estimates in this publication are for the middle month of the quarter. They are obtained by dampening out the irregular component from the seasonally adjusted series and are calculated using a centred 13-term Henderson moving average of the monthly seasonally adjusted series. Estimates for the six most recent months cannot be calculated using this centred average method; instead an asymmetric average is used. This can lead to revisions in the trend estimates for the last six months when data become available for later months. Revisions of trend estimates will also occur with revisions to the original data and re-estimation of seasonal adjustment factors.

TREND ESTIMATES *continued*

25 If a series is highly volatile then the trend estimates will be subject to greater revision for the latest few months as new data become available. However, it is important to note that this does not make the trend series inferior to the seasonally adjusted or original series.

26 For more information, see *A Guide to Interpreting Time Series—Monitoring Trends, an Overview* (Cat. no. 1348.0), or contact the Assistant Director, Time Series Analysis on Canberra 02 6252 6345 or at timeseries@abs.gov.au.

27 Two feature articles which have appeared in the ABS monthly publication *Australian Economic Indicators* (Cat. no. 1350.0) may also be of interest:

- Picking Turning Points in the Economy (April 1991); and
- Smarter Data Use (March 1992).

COMPARABILITY OF RESULTS WITH
THE LABOUR FORCE SURVEY

28 The monthly LFS collects data by interview from a sample of about 30,000 private and non-private dwellings, using trained interviewers. Self-employed persons are included in the LFS. The estimates are published in *Labour Force, Australia, Preliminary* (Cat. no. 6202.0) and *Labour Force, Australia* (Cat. no 6203.0). There are conceptual and methodological reasons for differences in the estimates produced by the two surveys. These are discussed in *Information Paper: Comparison of Employment Estimates from the Labour Force Survey and the Survey of Employment and Earnings* (Cat. no. 6263.0).

29 When making comparisons of the wage and salary earners components of the two surveys it must be borne in mind that the SEE draws its sample from the ABS Register while the LFS is a household survey. As discussed in paragraph 17, the Register is subject to some undercoverage of business units at any point in time. This can lead to undercoverage of samples of businesses selected from the Register. Estimates obtained from households are not similarly impacted.

30 Separate estimates of full-time and part-time employees are included in table 10. For definitions of these terms, see the Glossary. This table was first published in the June quarter 1987 issue of this publication. Information for previous quarters back to the September quarter 1983 is available on request. For the reasons outlined above in paragraph 29, it is difficult to compare estimates of full-time and part-time employees derived from the SEE with those produced from the LFS. In the LFS, a person who works more than 35 hours a week in total in two (or more) part-time jobs is classified as working full-time. However, in this situation, the SEE would show two part-time jobs as having been filled.

31 The ABS considers that the Labour Force series provides the better indicator of overall employment movements at the Australian and State levels. The aggregate employment estimates in the quarterly National Accounts are based on that source. The SEE is the preferred source for industry and sector estimates of employees.

COMPARABILITY OF RESULTS WITH
THE SURVEY OF AVERAGE WEEKLY
EARNINGS

32 The SEE collects total quarterly employee earnings primarily for use in estimating the gross domestic product component of the Australian National Accounts. While average employee earnings can be derived from these data, the results will not be comparable with those from the Survey of Average Weekly Earnings (AWE) published in *Average Weekly Earnings, States and Australia* (Cat. no. 6302.0). The SEE collects the sum of employee earnings for all pay periods ending in a quarter and the results will be affected by the varying number of pay periods from quarter to quarter, whereas the AWE relates to a specified pay period within a quarter and is not subject to such influences. In addition, certain types of payments within the scope of the SEE, such as retrospective pay, pay in advance, leave loadings and severance, termination and redundancy payments are specifically excluded from the AWE. The SEE earnings data are also subject to seasonal variations, particularly in the December and March quarters, due to the incidence of holidays taken in January being paid in advance and the earnings being reported in the December quarter figures.

SUPPRESSION OF DATA

33 Some data have been suppressed to prevent disclosure, either directly or by inference, of information relating to individual businesses. These data have been replaced by the symbol 'n.p.', but are included in totals.

RELATED PUBLICATIONS

34 Users may also wish to refer to the following publications which are available on request:

- *Information Paper: Improvements to Australian Bureau of Statistics Quarterly Business Indicators, 2001* (Cat. no. 5677.0)—issued 6 July 2001
- *Information Paper: Improvements to ABS Economic Statistics, 1997* (Cat. no. 1357.0)—issued 22 August 1997
- *Labour Force, Australia* (Cat. no. 6203.0)—issued monthly
- *Average Weekly Earnings, Australia* (Cat. no. 6302.0)—issued quarterly
- *Wage Cost Index, Australia* (Cat. no. 6345.0)—issued quarterly
- *Employee Earnings and Hours, Australia, Preliminary* (Cat. no. 6305.0)—issued biennially
- *Employee Earnings and Hours, Australia* (Cat. no. 6306.0)—issued biennially
- *Labour Statistics, Australia* (Cat. no. 6101.0)—issued irregularly
- *A Guide to Labour Statistics, 1986* (Cat. no. 6102.0)—issued 10 February 1986
- *Small Business in Australia, 1999* (Cat. no. 1321.0)—issued 23 May 2000
- *Labour Force Projections, Australia, 1999–2016* (Cat. no. 6260.0)—issued 1 September 1999
- *Directory of Industrial Relations Statistics* (Cat. no. 1134.0)—issued 21 August 1997.

35 Current publications produced by the ABS are listed in the *Catalogue of Publications and Products* (Cat. no. 1101.0). The ABS also issues, on Tuesdays and Fridays, a *Release Advice* (Cat. no. 1105.0) which lists publications to be released in the next few days. The Catalogue and Release Advice are available from any ABS office or the ABS website www.abs.gov.au.

EXPLANATORY NOTES *continued*

ABS DATA AVAILABLE ON REQUEST

36 As well as the statistics included in this and related publications, the ABS may have other relevant data available on request. Details of additional data available are shown in Special Data Service on page 33 of this publication.

ROUNDING

37 Where figures have been rounded, discrepancies may occur between sums of the component items and totals.

TECHNICAL NOTES

RELIABILITY OF ESTIMATES

1 As the estimates in this publication are based on information relating to a sample of employers rather than a full enumeration, they are subject to sampling variability. That is, they may differ from the estimates that would have been produced if the information had been obtained from all employers. This difference, called *sampling error*, should not be confused with inaccuracy that may occur because of imperfections in reporting by respondents or in processing by the ABS. Such inaccuracy is referred to as *non-sampling error* and may occur in any enumeration whether it be a full count or a sample. Efforts have been made to reduce non-sampling error by careful design of questionnaires, detailed checking of returns and quality control of processing.

2 The sampling error associated with any estimate can be estimated from the sample results. One measure of sampling error is given by the *standard error* which indicates the degree to which an estimate may vary from the value that would have been obtained from a full enumeration (the 'true' figure). There are about two chances in three that a sample estimate differs from the true value by less than one standard error, and about nineteen chances in twenty that the difference will be less than two standard errors.

3 If the standard error of an estimate is large relative to the size of the estimate, the usefulness of that estimate is seriously impaired. For the tables in this publication, estimates with standard errors greater than 25% of the estimate have been labelled with an asterisk.

4 Standard errors of estimates of level, by industry and States and Territories, are shown in table A for the private sector and table B for the public sector and relate only to the middle month of the quarter. As the survey is conducted quarterly from a common sample of employer units, who report details of employees for each month of the quarter, standard errors on all estimates for employees in each month are of a similar magnitude.

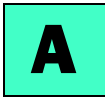
5 Standard errors of estimates of movements provide a measure of the reliability of changes in the level of an estimate. Tables A and B show standard errors of movements in the level of estimates of employees for the private and public sectors respectively between the middle months of the most recent two quarters.

6 An example of the use of standard error on levels is as follows. If the estimated number of wage and salary earners was 5,800,000 with a standard error of 34,000, then there would be about two chances in three that a full enumeration would have given a figure in the range 5,766,000 to 5,834,000 and about nineteen chances in twenty that it would be in the range 5,732,000 to 5,868,000.

7 An example of the use of standard error on movements is as follows. If the estimated standard error for a quarterly change estimate of wage and salary earners was 15,000 and the quarterly change estimate between two quarters was 40,000 persons, then there would be about two chances in three that a full enumeration would have given a quarterly change estimate in the range 25,000 to 55,000 persons and about nineteen chances in twenty that it would be in the range 10,000 to 70,000 persons.

8 Quarterly movements in estimates of wage and salary earners are considered to be statistically significant where they exceed two standard errors.

9 Standard errors for earnings are approximately the same relative size as standard errors for the number of employees. Detailed standard errors are available on request.



STANDARD ERRORS, Wage and Salary Earners—Private Sector

Industry	New South Wales	Victoria	Queensland	South Australia	Western Australia	Tasmania	Northern Territory	Australian Capital Territory	Australia
	'000	'000	'000	'000	'000	'000	'000	'000	'000
LEVEL									
Mining	1.0	0.2	0.5	0.1	2.4	0.2	0.1	—	2.6
Manufacturing	11.9	10.6	7.7	3.7	5.2	1.0	0.4	0.4	18.8
Electricity, gas and water supply	0.1	0.1	0.1	—	—	—	—	—	0.2
Construction	13.7	9.3	7.1	7.8	7.4	1.3	0.6	0.8	20.9
Wholesale trade	10.0	9.3	13.0	6.0	6.1	3.3	1.0	0.5	20.9
Retail trade	13.6	17.5	16.1	5.2	13.9	2.4	0.8	1.6	31.2
Accommodation, cafes and restaurants	10.3	11.1	7.5	3.9	3.6	1.1	1.0	0.7	17.6
Transport and storage	7.0	4.9	17.3	3.0	2.6	1.4	0.7	0.4	19.6
Communication services	2.5	1.1	0.4	0.2	0.6	0.1	—	0.1	2.8
Finance and insurance	4.4	7.1	4.3	2.2	1.9	0.7	0.1	0.2	9.9
Property and business services	21.3	51.2	16.2	5.6	13.7	2.4	2.6	4.1	59.9
Education	3.1	5.7	2.9	1.3	1.3	1.0	0.2	0.2	7.4
Health and community services	11.9	12.7	7.3	2.4	5.8	2.0	0.8	1.2	20.0
Cultural and recreational services	6.3	4.1	2.3	2.3	1.1	0.4	0.3	0.8	8.3
Personal and other services	6.9	7.3	3.3	1.9	4.0	2.0	1.0	1.1	11.6
All industries	38.6	60.6	35.5	14.6	24.1	6.2	3.5	4.9	85.2
QUARTERLY MOVEMENT									
Mining	1.0	0.2	0.3	0.2	1.4	0.2	0.1	—	1.8
Manufacturing	8.2	7.2	6.5	1.7	3.6	0.7	0.3	0.7	13.3
Electricity, gas and water supply	0.2	0.1	0.1	—	—	—	—	—	0.2
Construction	15.3	6.3	7.3	8.4	3.6	1.2	0.4	0.7	20.0
Wholesale trade	8.5	6.1	4.9	2.4	3.5	3.2	0.3	0.4	12.6
Retail trade	14.0	18.2	12.6	5.0	4.7	3.7	0.6	1.6	27.1
Accommodation, cafes and restaurants	10.9	5.6	6.1	3.1	4.3	0.8	1.0	0.5	14.6
Transport and storage	5.7	3.0	3.9	1.6	3.2	1.3	2.1	0.3	8.6
Communication services	2.3	2.6	0.1	0.2	0.8	0.1	0.1	—	3.6
Finance and insurance	2.1	7.6	1.5	1.7	1.6	0.7	0.1	0.2	8.4
Property and business services	15.5	33.2	12.3	1.7	6.7	2.4	0.7	3.9	39.4
Education	5.0	3.8	2.4	0.9	1.6	1.0	0.1	0.2	7.0
Health and community services	12.8	7.0	10.5	2.8	2.1	0.5	0.7	1.5	18.3
Cultural and recreational services	2.9	4.5	5.3	1.3	3.0	0.4	0.3	0.4	8.2
Personal and other services	6.0	1.6	5.9	1.3	3.8	2.2	1.0	0.4	9.8
All industries	34.8	41.9	25.8	11.6	13.1	6.3	2.9	4.7	62.8
ANNUAL MOVEMENT									
Mining	1.6	0.4	0.8	0.2	2.8	0.2	0.2	—	3.3
Manufacturing	13.9	14.8	9.0	4.6	7.6	2.1	0.5	0.7	23.9
Electricity, gas and water supply	0.1	0.1	0.1	—	—	—	—	—	0.2
Construction	22.2	12.5	7.7	8.9	7.4	1.6	0.7	1.2	28.9
Wholesale trade	11.1	7.8	7.2	6.1	5.4	3.4	0.7	0.6	17.5
Retail trade	15.1	17.6	15.6	7.1	9.2	4.8	1.0	2.0	30.6
Accommodation, cafes and restaurants	14.6	11.7	6.6	3.1	7.4	1.0	1.1	1.3	21.3
Transport and storage	6.2	5.2	10.9	2.7	2.6	1.5	1.4	0.4	14.0
Communication services	6.1	3.3	0.4	0.2	0.6	0.2	—	0.1	6.9
Finance and insurance	8.0	9.2	3.4	2.2	3.6	0.8	0.1	0.3	13.3
Property and business services	22.8	55.5	15.8	7.2	10.6	2.3	0.3	6.9	63.6
Education	6.8	6.2	3.4	1.5	1.8	1.1	0.2	0.3	10.1
Health and community services	14.5	11.9	10.1	4.2	5.8	2.0	0.7	1.2	22.4
Cultural and recreational services	8.4	5.7	5.4	1.5	1.6	1.0	0.4	0.9	11.7
Personal and other services	7.4	6.2	4.0	2.1	4.0	2.2	1.0	1.0	11.6
All industries	47.8	65.8	31.9	17.0	21.8	7.8	2.7	7.7	91.9

STANDARD ERRORS, Wage and Salary Earners—Public Sector

Industry	New South Wales	Victoria	Queensland	South Australia	Western Australia	Tasmania	Northern Territory	Australian Capital Territory	Australia
	'000	'000	'000	'000	'000	'000	'000	'000	'000
LEVEL									
Agriculture, forestry and fishing	0.4	—	—	—	—	—	—	—	0.4
Manufacturing	—	—	—	—	—	—	—	—	—
Electricity, gas and water supply	0.2	—	—	—	—	—	—	—	0.2
Construction	—	—	0.1	—	—	—	—	—	0.1
Transport and storage	—	0.1	—	—	—	—	—	—	0.1
Communication services	—	—	—	—	—	—	—	—	—
Finance and insurance	—	—	0.1	—	—	—	—	0.1	0.1
Property and business services	0.1	0.3	0.1	0.1	0.1	—	—	0.1	0.4
Government administration and defence	0.9	0.2	1.7	0.5	1.5	—	0.3	0.1	2.5
Education	0.2	3.1	0.1	—	0.1	—	—	—	3.1
Health and community services	0.2	0.6	0.8	0.1	0.1	—	—	—	1.0
Cultural and recreational services	0.1	0.1	0.1	0.1	—	—	—	—	0.2
Personal and other services	0.1	0.3	—	—	0.4	—	—	—	0.5
All industries(a)	1.1	3.2	1.9	0.5	1.6	0.1	0.3	0.2	4.2
QUARTERLY MOVEMENT									
Agriculture, forestry and fishing	0.4	—	—	—	—	—	—	—	0.4
Manufacturing	—	—	—	—	—	—	—	—	—
Electricity, gas and water supply	0.2	0.1	—	—	—	—	—	—	0.2
Construction	—	—	0.1	—	—	—	—	—	0.1
Transport and storage	—	0.1	—	—	—	—	—	—	0.1
Communication services	—	—	—	—	—	—	—	—	—
Finance and insurance	—	—	—	—	—	—	—	0.1	0.1
Property and business services	0.1	0.3	0.1	—	0.1	—	0.3	0.1	0.5
Government administration and defence	1.0	0.3	2.0	0.4	1.5	—	0.3	0.2	2.7
Education	0.2	1.9	0.1	—	0.2	—	—	—	1.9
Health and community services	0.1	0.6	0.6	0.1	0.1	—	—	—	0.8
Cultural and recreational services	0.1	0.4	0.1	0.1	—	0.1	—	—	0.4
Personal and other services	0.1	0.4	—	—	0.4	—	—	—	0.6
All industries(a)	1.1	2.1	2.1	0.4	1.6	0.1	0.4	0.2	3.6
ANNUAL MOVEMENT									
Agriculture, forestry and fishing	0.4	—	0.8	—	—	—	—	—	0.9
Manufacturing	—	—	—	—	—	—	—	—	—
Electricity, gas and water supply	0.2	0.1	0.1	—	—	—	—	—	0.2
Construction	—	—	0.1	—	—	—	—	—	0.1
Transport and storage	0.4	0.1	0.1	—	0.1	—	—	—	0.4
Communication services	—	—	—	—	—	—	—	—	—
Finance and insurance	0.1	—	0.1	0.1	—	—	—	0.1	0.2
Property and business services	0.3	0.5	0.1	0.1	0.1	—	0.1	0.3	0.7
Government administration and defence	1.3	0.3	2.8	0.6	1.5	—	0.4	0.2	3.5
Education	0.2	3.2	0.1	—	0.1	—	—	—	3.2
Health and community services	0.2	0.7	0.8	0.1	0.1	—	—	—	1.1
Cultural and recreational services	0.1	0.5	0.1	0.1	—	—	—	—	0.5
Personal and other services	0.1	0.8	0.2	—	0.4	—	—	—	1.0
All industries(a)	1.5	3.4	3.0	0.6	1.6	0.1	0.4	0.4	5.2

(a) Includes employees classified to Mining, Wholesale trade, Retail trade and Accommodation, cafes and restaurants.

SPECIAL DATA SERVICE

INTRODUCTION

As well as the statistics included in this publication, other data is available from the Survey of Employment and Earnings on request. These data can be produced for clients as customised reports. The variables are listed below.

HOW TO PLACE AN ORDER

Firstly, determine the population and the variables (see following) that you require estimates for. A covering letter indicating these requirements and the intended uses of the data requested should be addressed to:

Labour Employer Statistics Section
Australian Bureau of Statistics
GPO Box K881
PERTH WA 6842

CONTACT OFFICER

If you wish to discuss individual requests, especially in regard to the reliability of estimates for particular cross-classifications and the charges involved, please telephone Naomi Summers on Perth 08 9360 5141.

VARIABLES

The following variables are available from this survey (subject to the reliability of the estimates. The more variables included in any one tabulation the more likely it is that confidentiality provisions associated with the data will be invoked and some data suppressed):

Employees	Persons (available by month) Full-time/Part-time (available by mid-month of quarter)
Gross earnings (available by quarter)	Gross wages and salaries Severance, termination and redundancy payments Fees paid to directors and office holders
Sector	Private sector Public Sector
Level of government	Commonwealth Government State Government Local government
Public institutional sector (SISCA)	Public trading enterprises Public financial enterprises General government
Sex	Males/Females (available for mid-month of quarter) until May 1996 only
Industry (ANZSIC classification)	ANZSIC Division (1-digit code—as shown in this publication) ANZSIC Sub-division (2-digit code) ANZSIC Group (3-digit code) ANZSIC Class (4-digit code)
Employer unit size (private sector only)	Any user specified range (e.g. Under 20 employees; 20–49 employees; 50–99 employees) Ranges can overlap and do not have to cover the complete range.

G L O S S A R Y

Commonwealth government employees	Employees of all departments, agencies and authorities created by or reporting to the Commonwealth Parliament. Those bodies run jointly by the Commonwealth Government and State Governments are classified to Commonwealth.
Employer size	To derive estimates of employer size, each of the approximately 7,500 private sector employer units is allocated a size classification based on the number of employees actually reported for the middle month of the quarter. The size classification reflects the size of a business in each State or Territory and not necessarily the size of a business Australia wide.
Employer units	Employer units are the statistical units which make up the population from which the sample was drawn (see paragraph 7 of the Explanatory Notes).
Full-time employees	Permanent, temporary and casual employees who normally work the agreed or award hours for a full-time employee in their occupation and who received pay for any part of the reference period. If agreed or award hours do not apply, employees are regarded as full-time if they ordinarily work 35 hours or more per week.
General government enterprises	Public sector enterprises mainly engaged in the production of goods and services, outside the normal market mechanisms, providing these goods and services to the general public. The cost of operations is often financed from public revenues (e.g. government departments).
Gross earnings	Payments to employees before tax and other items (such as superannuation) are deducted. They comprise amounts paid from interstate or overseas; ordinary time and overtime earnings; overaward payments; penalty payments, shift and other remunerative allowances; commissions and retainers; bonuses and similar payments; payments under incentive or piecework; payments under profit-sharing schemes; leave loadings; annual and long service leave payments; sick leave payments; advance and retrospective payments; salaries and fees paid to company directors, members of boards, committees, commissions, councils, etc.; amounts paid to employees on workers' compensation who continue to be paid through the payroll; and severance, termination and redundancy payments.
Industry	Industry is classified according to the Australian and New Zealand Standard Industrial Classification (see paragraphs 10–13 of the Explanatory Notes).
Institutional sector	Institutional sector is classified according to the Standard Institutional Sector Classification of Australia (see paragraph 14 of the Explanatory Notes).
Local government employees	Employees of municipalities and shires and other local authorities created by or subject to the provisions of local government legislation, such as county councils in New South Wales.

GLOSSARY *continued*

Number of employees	<p>All wage and salary earners who received pay for any part of the relevant pay period, including:</p> <ul style="list-style-type: none">▪ permanent, temporary, casual, managerial and executive employees;▪ part-time and casual employees who may have received pay for only a few hours during the reference period; and▪ employees on paid leave and those on workers' compensation who continue to be paid through the payroll. <p>Casual employees who work on an irregular basis and who were not paid for the relevant pay period, employees on leave without pay, on strike or stood down without pay for the whole of the pay period are excluded.</p>
Part-time employees	<p>Permanent, temporary and casual employees who are not classified as full-time employees as defined.</p>
Public financial enterprises	<p>Public sector enterprises actively involved in financial market transactions such as borrowing and lending. Excluded are those public bodies whose funds flow directly to or from general government revenue.</p>
Public sector employees	<p>Administrative employees and all other employees of Commonwealth, State and local government businesses and financial undertakings engaged in services and activities such as railways, road transport, banks, postal and telecommunications, education, radio, television, police, public works, factories, marketing authorities, hospitals and welfare institutions.</p>
Public trading enterprises	<p>Public sector enterprises predominantly engaged in the production of goods and services with an intention of maximising profits and financial returns with most operating costs being derived from trading activities.</p>
Reference period for earnings	<p>All pay periods which end within the quarter.</p>
Reference period for the number of employees	<p>The last pay period ending on or before the third Friday in each month.</p>
Sector	<p>Public sector includes local government authorities and all government departments, agencies and authorities created by, or reporting to, the Commonwealth Parliament and State Parliaments. All remaining employees are classified as private sector.</p>
State government employees	<p>Employees of all State government departments and authorities created by, or reporting to, State Parliaments, including organisations for which the Commonwealth has assumed financial responsibility. Following self-government, the Northern Territory and the Australian Capital Territory administrations have been classified to State Governments. Employees of State Governments employed interstate are included in the estimates of the State in which they are based.</p>

FOR MORE INFORMATION...

- INTERNET* **www.abs.gov.au** the ABS web site is the best place to start for access to summary data from our latest publications, information about the ABS, advice about upcoming releases, our catalogue, and Australia Now—a statistical profile.
- LIBRARY* A range of ABS publications is available from public and tertiary libraries Australia-wide. Contact your nearest library to determine whether it has the ABS statistics you require, or visit our web site for a list of libraries.
- CPI INFOLINE* For current and historical Consumer Price Index data, call 1902 981 074 (call cost 77c per minute).
- DIAL-A-STATISTIC* For the latest figures for National Accounts, Balance of Payments, Labour Force, Average Weekly Earnings, Estimated Resident Population and the Consumer Price Index call 1900 986 400 (call cost 77c per minute).

INFORMATION SERVICE

Data which have been published and can be provided within five minutes are free of charge. Our information consultants can also help you to access the full range of ABS information—ABS user-pays services can be tailored to your needs, time frame and budget. Publications may be purchased. Specialists are on hand to help you with analytical or methodological advice.

- PHONE* **1300 135 070**
- EMAIL* **client.services@abs.gov.au**
- FAX* 1300 135 211
- POST* Client Services, ABS, GPO Box 796, Sydney 1041

WHY NOT SUBSCRIBE?

ABS subscription services provide regular, convenient and prompt deliveries of ABS publications and products as they are released. Email delivery of monthly and quarterly publications is available.

- PHONE* 1300 366 323
- EMAIL* subscriptions@abs.gov.au
- FAX* 03 9615 7848
- POST* Subscription Services, ABS, GPO Box 2796Y, Melbourne 3001



2624800006017
ISSN 0814-6195

RRP \$20.00